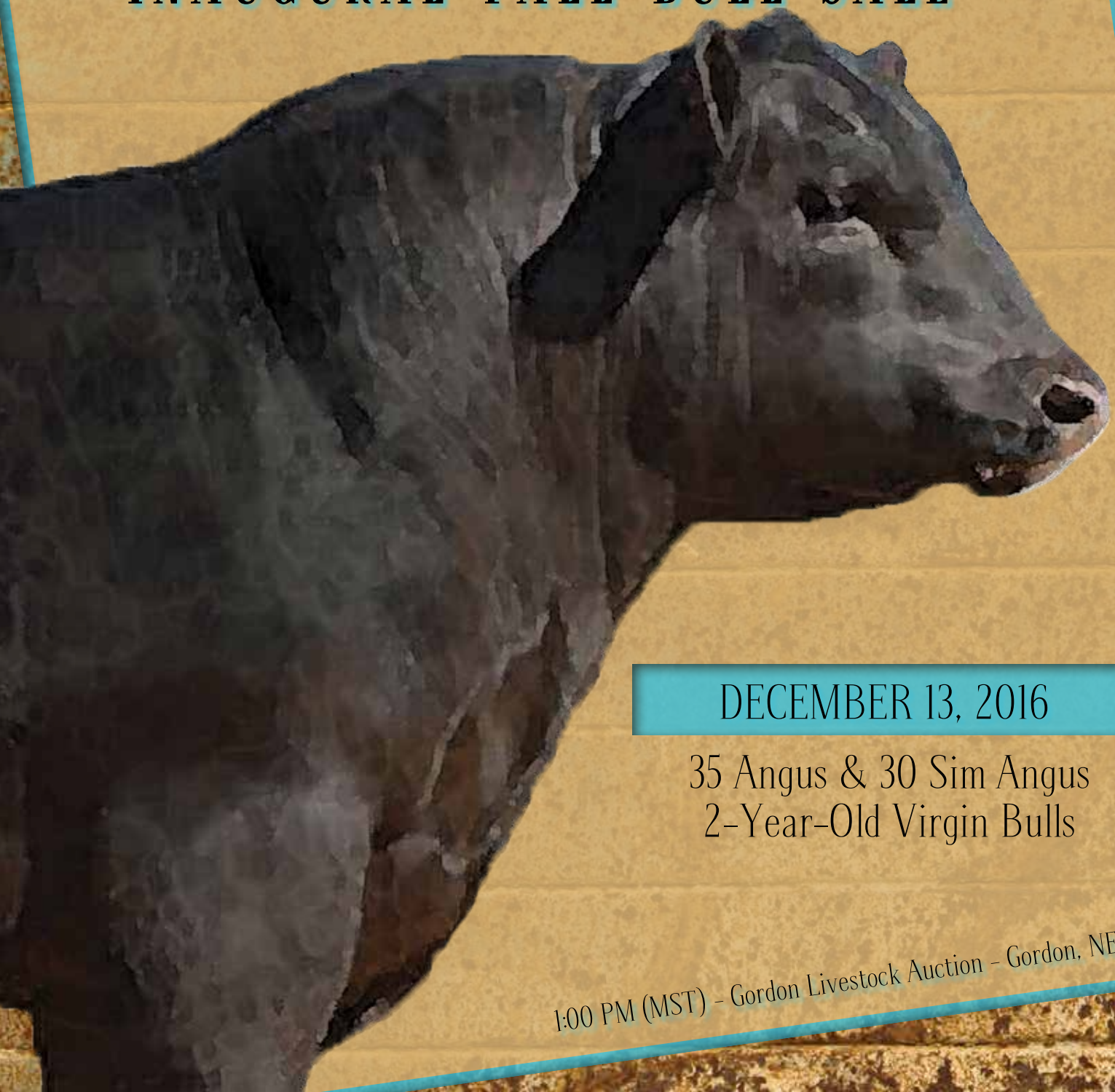


RIVERS EDGE CATTLE COMPANY & SPITTOON RANCH INAUGURAL FALL BULL SALE



DECEMBER 13, 2016

35 Angus & 30 Sim Angus
2-Year-Old Virgin Bulls

1:00 PM (MST) - Gordon Livestock Auction - Gordon, NE

INAUGURAL FALL BULL SALE



Cattlemen and Friends,

Rivers Edge Cattle Company officially came to be in 2014, as Courtney, Oakley and I were able to buy out the February/March calving herd, including all the registered cows, and start our own venture. We maintain 450 cows and have a growing embryo program, where only the top end is kept as bulls. With heavy selection pressure, we are able to improve the quality of bulls offered. This year is no different. We are proud of this set of yearling bulls and appreciate your interest in our program.

With our changes in ownership, we are excited to be able to focus solely on raising quality cattle that produce efficiently on minimal harvested forage, starting with heifer development. Our heifers are developed to transition into hardy, range cows that don't need lots of pampering to survive. They graze as long as possible on corn stalks in the fall and winter, and typically only get fed hay shortly before calving begins. We don't mess with udder, disposition, or mothering issues. As labor becomes a larger issue in our industry, we feel that cattle that do more for themselves are more economically feasible.

2016 has brought us many changes, one of which has been the opportunity to partner with Matt & Mindy Peters in our inaugural Fall Bull Sale. Our programs mirror each other in many ways, right down to the way we grow our bulls. We are pleased to bring a group of aged bulls that have been properly developed to ensure soundness, libido, and longevity. These bulls are selected with a strong emphasis on maternal traits and those traits that most matter to commercial cattlemen.

We are very excited about how these bulls have developed and continue to grow. Their development, under the guidance of Jeremy Martin of Great Plains Livestock Consulting, is aimed at developing the bulls to become efficient breeders. We manage them to gain 2.5#/hd/day through their entire development, with little to no starch in their diets. Our bulls ran on grass through October 1st, then have been grown on a ration without corn up to the sale date.

We appreciate our past customers and look forward to meeting new ones. We stand by our bulls 100% and have a full guarantee on them through the first breeding season. Consider that these bulls will be able to cover more cows than yearling bulls, as well as having a chance to adapt to your ranch well before the breeding season. And, last but not least, remember the Section 179 tax deduction for bull purchases as the year comes to a close.

We are grateful to be in the cattle business and to have a chance to work with some the best cattlemen and women in the world. Thank you for your support and we hope to see you December 13th.

Seth, Courtney, and Oakley Terrell

708 SHELTON ST. · CHADRON, NE 69337 · 308-430-0705

WWW.RIVERSEDECATTLE.COM

Dear Beef Producers,

I'd like to invite everyone to our 1st Annual Production Sale, River's Edge Cattle Company and Spitoon Ranch, Inc. Bull Sale. Seth, Courtney, Mindy, and I would like to thank everyone for your interest in our bulls.

Agriculture got tough faster than expected in this past year. Good quality genetics in cattle still sell well, no matter the markets. We strive for the quality in our livestock that we feel you, the producer, wants. I believe that is represented well in this group of bulls from these 2 ranches.

This year, we are selling two coming-3 year old virgin bulls from Alderson Angus of Osmond, NE, Lots 24 and 25. Curtis Alderson handles Spitoon Ranch rations and sells QLF, which we have used for 6 years. Alderson Angus raise quality bulls that grid well. In the last 7 years, 100% of the fat cattle have graded above choice. In 3 years, the cattle have graded 50% prime.

Mindy and I are very excited about this group of bulls that we have developed and are ready to see them in production. We thank everyone for their continued support and interest in our program.

Matt, Mindy, Caleb, and Kylie Peters

5803 270TH LANE · RUSHVILLE, NE 69360 · 308-360-2736

WWW.SPITTOONRANCH.COM

SALE INFO

RIVERS EDGE CATTLE CO. & SPITTOON RANCH INC. BULL SALE

December 13, 2016 • 1:00 PM MST

Gordon Livestock Auction • 108 Foch Street • Gordon, NE • 308-282-1171 • www.gordonlivestock.com

RIVERS EDGE BULLS LOCATION

The bulls can be viewed until Dec. 12 at the ranch south of Hay Springs. Take Hwy. 87 south 13 miles. The bulls will be next to the highway at mile marker 31 on the east side.

SPITTOON RANCH BULLS LOCATION

The bulls can be viewed until Dec. 11 at the ranch 4 miles south of Clinton on 270th Ln.

AUCTIONEER

Kyle Layman - 785-421-3441

TERMS AND CONDITIONS

All bulls sell under the Standard Terms and Conditions established by the American Angus Association.

GENETIC DEFECT GUARANTEE

None of the bulls in the River's Edge Cattle Co. and Spitoon Ranch offering will be carriers or potential carriers of Arthrogryposis Multiplex (Curly Calf), Neuropathic Hydrocephalus, or Fawn Calf (CA).

FERTILITY

All bulls will pass a breeding soundness exam prior to the sale.

The sale will be broadcast on DVAuction listed under "Gordon Livestock Auction". Sign up and register at www.dvauction.com

DVAuction
Broadcasting Real-Time Auctions

SIGHT UNSEEN WARRANTY

If you are unable to attend our sale and wish to purchase a bull, please contact us. On sale day we will assign someone to evaluate your bull and represent your bid during the sale. Your bid will remain confidential and be handled professionally. If for any reason you don't like the bull, we will take him back. No questions asked, full refund.

DELIVERY OPTIONS

Option 1: Take your bull home the day of the sale or the Wednesday after the sale and receive \$200 off the purchase price of each bull.

Option 2: We will feed the bulls and deliver them to you (free up to 250 miles) beginning April 1.

Option 3: We will feed the bulls for you until you are ready for them. You will be billed for feed at a rate of \$2.00 per day, per bull after April 15. You will be responsible for picking up your bulls.

FIRST BREEDING SEASON GUARANTEE

All bulls selling for over \$2,500 are sold with a first year breeding season guarantee (90 days after turnout). If a bull is deemed unusable, the purchaser will be given credit for 50% of the price of the bull minus salvage value. All notices must take place prior to September 1, 2017. This is not a mortality insurance policy, nor does it cover mismanagement or neglect. We do not cover injuries sustained prior to breeding season if your bull is turned out with other bulls.

STORM DATE

If inclement weather is a concern, please contact Matt, Seth, either web site, or Gordon Livestock for any changes.

REFERENCE SIRES

BARSTOW CASH

AAA Reg. Number: 17145326

Sire: SITZ Upward 307R
Sire: SITZ DASH 10277
Sitz Everelda Entense 2665
S A V Final Answer 0035
Dam: BARSTOW QUEEN W16
RCA Queen R42

CED	BW	WW	YW	Milk	\$W	\$EN
+12	+0.3	+67	+130	+18	+60.00	-5.76

- Proven light birth-weight, easy fleshing, large volume, thick & deep. We really like the females he produces



BARSTOW CASH

REFERENCE SIRES

GDAR CJD JUSTICE 1717

AAA Reg. Number: 16944760

ER Justice N013
Sire: GDAR JUSTICE 622
GDAR Miss Wix 430

GDAR Image 795
Dam: GDAR CJD BLACKCAP LADY 9774
GDAR CJD Blackcap Lady 7719

CED	BW	WW	YW	Milk	\$W	\$EN
+2	+1.8	+64	+114	+25	+63.07	-11.36

- Owned by S & V Livestock & Spitoon Ranch, has become one of our premiere cow producers



GDAR CJD JUSTICE 1717

SPITTOON STIMULUS 26

AAA Reg. Number: 17515712

H A Power Alliance 1025
Sire: CONNEALY STIMULUS 8419
Black Creesa of Conanga 5332

HA New Design 4535
Dam: BLACKBIRD OF SV 038
Blackbird of SV 594

CED	BW	WW	YW	Milk	\$W	\$EN
+6	+0.8	+44	+77	+30	+45.99	-11.03

- Light birth-weight bull that we produced. Out of a super HA New Design cow bred to Connealy Stimulus 8419



SPITTOON STIMULUS 26

SITZ DASH 10277

AAA Reg. Number: #15656868

Connealy Onward
Sire: SITZ UPWARD 307R
Sitz Henrietta Pride 81M

O C C Emblazon 854E
Dam: SITZ EVERELDA ENTENSE 2665
Sitz Everelda Entense 4948

CED	BW	WW	YW	Milk	\$W	\$EN
+13	-0.6	+46	+77	+19	+62.86	+25.88

- Proven calving ease sire
- Calves come easy then have explosive growth
- Daughters make excellent uddered, easy fleshing cows
- Upward phenotype in a moderate, calving ease package



SITZ DASH 10277

GDAR GAME DAY 449

AAA Reg. Number: #14691231

A A R New Trend
Sire: BOYD NEW DAY 8005
S V F Forever Lady 57D

Tehama Band 207
Dam: G D A R MISS WIX 474
G D A R Miss Wix 749

CED	BW	WW	YW	Milk	\$W	\$EN
+10	-0.7	+46	+87	+24	+77.79	+29.03

- Proven, popular, outcross genetics
- Sires moderate framed, wide based cattle
- One of the highest \$W bulls of the breed
- Calves come easy but have lots of early growth



GDAR GAME DAY 449

REFERENCE SIRES

O C C MISSING LINK 830M

AAA Reg. Number: #14456399

O C C Emblazon 854E
Sire: O C C HEADLINER 661H
O C C Juanada 858F

O C C Glory 950G
Dam: O C C DIXIE ERICA 946K
O C C Dixie Erica 816B

CED	BW	WW	YW	Milk	\$W	\$EN
+7	-0.5	+44	+72	+21	+56.36	+17.96

- Very complete sire
- We came back to him after getting daughters in production
- Long, thick, clean, stylish
- Makes the right kind of cows



OCC MISSING LINK 830M

HOOKS TRINITY 9T

ASA Reg. Number: 2389750

Nichols Legacy G151
Sire: HOOKS SHEAR FORCE 38K
C&D Tracy

Bon View New Design 878
Dam: HOOKS PEARL 22-P
ESJ4

CE	BW	WW	YW	Milk	\$W	\$EN
+24.9	-4.7	+67.0	+97.2	+22.5		

- No holes sire; excels in every aspect
- We will continue to use this sire heavily
- Long, clean made, wide based cattle
- Excellent structure and disposition



HOOKS TRINITY 9T

TF SUPERIOR

SimAngus

Ellingson Legacy M229
Sire: MR NLC SUPERIOR S6018
EBS Jokers Caren

BAR EXT Traveler 205
Dam: TF BAR EXT 415
TF Westwind 201

CE	BW	WW	YW	Milk	\$W	\$EN
+18.7	-0.5	+57.4	+91.7	+28.2		

- Half Blood Resident Herd Sire
- All-Around Elite Sire: Makes exceptional daughters and stout sons
- Dam is the BEST cow in our herd: She'll turn 15 this spring and still has the udder of a 3-year-old
- 415 has raised us 6 sons that we've used in our commercial herd



SIRE - MR NLC SUPERIOR S6018

RR GOLD BUCKLE 2225

AAA Reg. Number: #14320984

S A F Fame
Sire: S A F FOCUS OF E R
G D A R Forever Lady 246

Q A S Traveler 23-4
Dam: R R EVERELDA ENTENSE 0413
RR Everelda Entense 8320 TPB

CED	BW	WW	YW	Milk	\$W	\$EN
+11	-0.8	+38	+73	+24	+33.71	-2.66

- Old school, light birth-weight cow producer. We have a lot of commercial females that are our top producers from this bull



BACK IN THE DAY!

SPITTOON 2-YEAR-OLD ANGUS BULLS

Lot 1 SPITTOON CASHED IN 502

Angus #18405586 • 3/24/2015 • Safe for Cows

Sitz Dash 10277
BARSTOW CASH
Barstow Queen W16
SR Higher Up 0073
SPITTOON HIGHER UP 329
SV Blackcap 1139

Act. BW	82
Adj. WW	776
CED	5
BW	2.4
WW	66
YW	122
Milk	25
\$W	50.71
\$EN	-24.72

- Higher Up dam going back to Final Answer is producing super WW of +66 and YW of 122. Spitoon Cashed In is one of our favorites. His YW going to grass was 1165 lbs., IMF of 3.17, Ratio 115 with a 12.5 Ribeye.



LOT 1

Lot 3 SPITTOON CASH 504

Angus #18405617 • 3/25/2015 • **** Heifer Bull

Sitz Dash 10277
BARSTOW CASH
Barstow Queen W16
RR New Label 2702
SV PRINCESS 3012
SV Princess 618

Act. BW	71
Adj. WW	666
CED	11
BW	0.0
WW	60
YW	114
Milk	20
\$W	45.82
\$EN	-14.26

- This Cash bull has good calving ease with great performance behind it. YW at +114, his dam SV Princess 3012 comes from a good line of Rolling Rock genetics. Moderate frame, lots of depth.



LOT 3

Lot 2 SPITTOON GOLD BUCKLE 503

Angus #18404477 • 3/25/2015 • **** Heifer Bull

S A F Focus of E R
RR GOLD BUCKLE 2225
R R Everelda Entense 0413
HA Future Direction 6672
SV PRINCESS 1127
SV Princess 618

Act. BW	77
Adj. WW	665
CED	10
BW	-1.5
WW	45
YW	83
Milk	26
\$W	44.81
\$EN	-8.11

- Rolling Rock Gold Buckle 2225 calving ease bull and great cow maker dam SV Princess 1127 raised a top bull sold in 2015 to Barb Sebesta of Chadron.



LOT 2

Lot 4 SPITTOON MONEY MAN 506

Angus #18405620 • 3/26/2015 • **** Heifer Bull

Sitz Dash 10277
BARSTOW CASH
Barstow Queen W16
SR Higher Up 0073
SV BLCK BELLE 3009
SV Black Belle 859

Act. BW	71
Adj. WW	755
CED	13
BW	-1.0
WW	62
YW	109
Milk	24
\$W	56.65
\$EN	-17.25

- Light birth weight, high production. Another female producer from Sitz Upward.



Lot 5 SPITTOON CASH 510

Angus #18405605 • 3/30/2015 • **** Heifer Bull

Sitz Dash 10277
BARSTOW CASH
Barstow Queen W16
GDAR CJD Justice 1717
SV BLACKCAP 3109
SV Blackcap 521

Act. BW	64
Adj. WW	694
CED	12
BW	-1.0
WW	61
YW	112
Milk	21
\$W	50.78
\$EN	-14.64

- WW +61, YW +112, Milk +21. SV Black Cap 3109 super producer.

SPITTOON 2-YEAR-OLD ANGUS BULLS

Lot 6 SPITTOON CASH 511 Angus #18405601 • 3/30/2015 • **** Heifer Bull

Sitz Dash 10277
BARSTOW CASH
Barstow Queen W16
Gdar Traveler 974
SV MISS FOREVER 3026
SV Miss Forever 968

Act. BW	66
Adj. WW	631
CED	13
BW	-1.1
WW	53
YW	102
Milk	20
\$W	42.24
\$EN	-8.68

- Good production, produced a lot of great females from GDAR Traveler 974.

Lot 9 SPITTOON CASH 514 Angus #18405602 • 3/31/2015 • **** Heifer Bull

Sitz Dash 10277
BARSTOW CASH
Barstow Queen W16
HA Thick 1670
SV QUEEN BEE 3120
SV Queen Mother 013

Act. BW	76
Adj. WW	654
CED	9
BW	0.9
WW	59
YW	109
Milk	20
\$W	45.23
\$EN	-11.92

- One of our best yearling weights at +109. Comes from a great cow SV Queen Bee 3120. Not a virgin bull. Used for clean up on Abbott's on accident.

Lot 7 SPITTOON JUSTICE 512 Angus #18380740 • 3/31/2015 • **** Heifer Bull

GDAR Justice 622
GDAR CJD JUSTICE 1717
GDAR CJD Blackcap Lady 9774
HA Future Direction 6672
SV JUANADA 2076
SV Juanada 638

Act. BW	77
Adj. WW	665
CED	7
BW	0.0
WW	53
YW	95
Milk	26
\$W	49.65
\$EN	-13.52

- Moderate frame with good length, plenty of maternal.

Lot 10 SPITTOON JUSTICE 516 Angus #18380741 • 3/31/2015 • **** Heifer Bull

GDAR Justice 622
GDAR CJD JUSTICE 1717
GDAR CJD Blackcap Lady 9774
Connealy Stimulus 8419
SV STIMULUS 2099
Eriskay of SV 412

Act. BW	88
Adj. WW	618
CED	3
BW	2.3
WW	49
YW	89
Milk	22
\$W	37.32
\$EN	-5.40

- Cow bull. Small frame, super thick and deep.



LOT 7

Lot 11 SPITTOON CASH 517 Angus #18405622 • 4/1/2015 • Safe for Cows

Sitz Dash 10277
BARSTOW CASH
Barstow Queen W16
SR Higher Up 0073
SV CLOUDY 3004
SV Cloudy 1141

Act. BW	83
Adj. WW	666
CED	7
BW	2.1
WW	58
YW	112
Milk	22
\$W	41.32
\$EN	-15.96

- Again one of our top WWs at +58 and YW at +112.

Lot 8 SPITTOON CASH 513 Angus #18405599 • 3/31/2015 • **** Heifer Bull

Sitz Dash 10277
BARSTOW CASH
Barstow Queen W16
Belvin Tres Marias Patron205
SV LASSIE 3038
SV Black Lassie 030

Act. BW	71
Adj. WW	659
CED	11
BW	0.7
WW	56
YW	102
Milk	19
\$W	43.14
\$EN	-7.37

- Good production. YW +102 and great maternal out of our Patron 205 cow. This bull is not a virgin bull, he was used as clean up in Lawrence, Kansas.

Lot 12 SPITTOON CASH 524 Angus #18405631 • 4/4/2015 • **** Heifer Bull

Sitz Dash 10277
BARSTOW CASH
Barstow Queen W16
HA New Design 4535
SV MISS FOREVER 036
S V Miss Forever 223

Act. BW	83
Adj. WW	654
CED	9
BW	0.2
WW	51
YW	92
Milk	23
\$W	44.79
\$EN	-8.09

- Awesome Barstow Cash, feminine head, great maternal, dam 036 has produced 4 of our top producing bulls, two of which sold to Barb Sebesta. YW of 985 with a Ribeye at 12.9 Ratio 112.

SPITOON 2-YEAR-OLD ANGUS BULLS

Lot 13 SPITOON SILVERADO 525

Angus #18405587 • 4/5/2015 • ★★★★★ Heifer Bull

Sitz Dash 10277
BARSTOW CASH
Barstow Queen W16
SR Higher Up 0073
SPITOON HIGHER UP 327
SV Mabel 022

Act. BW	76
Adj. WW	730
CED	9
BW	0.8
WW	61
YW	111
Milk	25
\$W	52.42
\$EN	-19.54

- One of the top WW +61 and also YW +111. Good maternal.



LOT 13

Lot 16 SPITOON JUSTICE 528

Angus #18380744 • 4/5/2015 • Safe for Cows

GDAR Justice 622
GDAR CJD JUSTICE 1717
GDAR CJD Blackcap Lady 9774
HA In Focus 7353
SV DIXIE ERICA 1109
SV Dixie Erica 871

Act. BW	88
Adj. WW	666
CED	2
BW	2.0
WW	50
YW	93
Milk	26
\$W	41.87
\$EN	-12.61

- Good production from our GDAR Justice 1717 bull.

Lot 17 SPITOON STIMULUS 529

Angus #18380752 • 4/6/2015 • Safe for Cows

Connealy Stimulus 8419
SPITOON STIMULUS 26
Blackbird of SV 038
BA Ten X 0304
SV ENVIOUS BLACKBIRD 2093
SV Enviou Blackbird 533

Act. BW	85
Adj. WW	744
CED	3
BW	1.9
WW	51
YW	85
Milk	32
\$W	52.47
\$EN	-17.43

- His sire Spitoon Stimulus 26 was our top selling bull in 2013, sold to S & V Livestock. We like the offspring.

Lot 14 SPITOON JUSTICE 526

Angus #18380745 • 4/5/2015 • Safe for Cows

GDAR Justice 622
GDAR CJD JUSTICE 1717
GDAR CJD Blackcap Lady 9774
SR Higher Up 0073
SV BLACK BELLE 2016
SV Black Belle 045

Act. BW	85
Adj. WW	725
CED	4
BW	1.7
WW	60
YW	105
Milk	27
\$W	53.67
\$EN	-19.49

- Good production, good maternal, and a nice, moderate package.

Lot 18 SPITOON CASH 530

Angus #18405607 • 4/6/2015 • Safe for Cows

Sitz Dash 10277
BARSTOW CASH
Barstow Queen W16
GDAR CJD Justice 1717
SV BLACKBIRD 3081
Blackbird of SV 715

Act. BW	83
Adj. WW	738
CED	5
BW	1.7
WW	61
YW	105
Milk	24
\$W	52.44
\$EN	-15.39

- Good production, good Milk at +24.

Lot 15 SPITOON JUSTICE 527

Angus #18380746 • 4/5/2015 • Safe for Cows

GDAR Justice 622
GDAR CJD JUSTICE 1717
GDAR CJD Blackcap Lady 9774
Marx 267 3K Jack 903
SV QUEEN MOTHER 1090
SV Queen Mother 977

Act. BW	90
Adj. WW	713
CED	0
BW	2.8
WW	60
YW	106
Milk	27
\$W	49.55
\$EN	-19.95

- Bigger frame coming from our Marx Jack 903 cow. Will raise great offspring.



LOT 15

SPITTOON 2-YEAR-OLD ANGUS BULLS

Lot 19 SPITTOON STIMULUS 531

Angus #18380753 • 4/6/2015 • ★★★★★ Heifer Bull

Connealy Stimulus 8419
SPITTOON STIMULUS 26
Blackbird of SV 038
HA Basic 9409
SV BLACK BELLE 2028
SV Black Belle 973

Act. BW	85
Adj. WW	653
CED	7
BW	0.7
WW	45
YW	77
Milk	25
\$W	43.29
\$EN	-4.09

- A lot of depth and width, good female producer going back to HA Future Direction 6672.



LOT 19

Lot 21 SPITTOON CASH 533

Angus #18405585 • 4/8/2015 • Safe for Cows

Sitz Dash 10277
BARSTOW CASH
Barstow Queen W16
SR Higher Up 0073
SPITTOON HIGHER UP 322
SV Cloudy Girl 028

Act. BW	89
Adj. WW	661
CED	4
BW	3.1
WW	55
YW	107
Milk	23
\$W	36.64
\$EN	-14.97

- Good production, good maternal, plenty of length.

Lot 22 SPITTOON JUSTICE 534

Angus #18380748 • 4/8/2015 • Safe for Cows

GDAR Justice 622
GDAR CJD JUSTICE 1717
GDAR CJD Blackcap Lady 9774
HA Broadcast 7274
BLACKBIRD OF SV 029
Blackbird of SV 715

Act. BW	87
Adj. WW	588
CED	4
BW	1.6
WW	44
YW	81
Milk	27
\$W	40.12
\$EN	-8.60

- Very nice Broadcast dam sired by one of our favorite bulls GDAR Justice 1717. Dam Black Bird of SV 029 produced a great heifer bull sold to Jim Smith in 2014.

Lot 20 SPITTOON JUSTICE 532

Angus #18380747 • 4/7/2015 • Safe for Cows

GDAR Justice 622
GDAR CJD JUSTICE 1717
GDAR CJD Blackcap Lady 9774
HA Program 5652
SV FOREVER LADY 2116
GDAR Forever Lady 2365

Act. BW	87
Adj. WW	687
CED	3
BW	2.3
WW	55
YW	96
Milk	26
\$W	47.24
\$EN	-13.98

- Clean head, nice frame, plenty of depth. His dam is one of our top producers.



LOT 20

Lot 23 SPITTOON CASH 536

Angus #18405630 • 4/11/2015 • Safe for Cows

Sitz Dash 10277
BARSTOW CASH
Barstow Queen W16
HA New Design 4535
SV BLACKBIRD 034
SV Blackbird 313

Act. BW	90
Adj. WW	683
CED	7
BW	1.1
WW	53
YW	98
Milk	25
\$W	45.65
\$EN	-13.52

- One of my favorites. Carries good depth, nice width, and tracks wide. Dam SV Blackbird 034 raised one of our best bulls in 2013, Patron 205 son, sold to Dick Minor.



LOT 23

COMING 3 ALDERSON ANGUS BULLS

Lot 24 ALDRSN EMBLAZON 405

Angus #18081687 • 4/23/2014 • Safe for Cows

O C C Emblazon 854E
DDA EMBLAZON 27C
D D A Melisa 824

O C C Emancipate 889E
ALDERSON GAMMER 125 EMAN
Alderson Gammer 425 Escalde

Act. BW	77
Adj. WW	602
CED	4
BW	2.2
WW	39
YW	61
Milk	25
\$W	40.64
\$EN	6.27

- Thick, calving ease Angus bull. Gammer 125 is a young, broody cow, perfect udder. Gammer 425 is still in production at 12 years of age.



LOT 24

Lot 25 ANGUS PLUS 418

Angus #Unregistered • 4/21/2014 • Safe for Cows

OCC Anchor
OCC EMANCIPATE
Dixie Erica RR 4309

Escalade 476
ALDERSON MISS WIX 123
SDSU Miss Wix 015

Act. BW	82
Adj. WW	596
CED	
BW	
WW	
YW	
Milk	
\$W	
\$EN	

- 418 will be an Emancipate calving ease bull that has more frame. His dam traces back to the original Miss Wix flushmates, Nichols Black Destiny daughters purchased from SDSU. 12.5% simmental. A very muscular bull.



RECC 2-YEAR-OLD ANGUS BULLS

Lot 26 RECC BASIC 502BI

Angus • 2/3/2015 • Safe for Cows

OCC Missing Link 830M
DUFF BASIC INSTINCT 650I
OCC Dixie Erica 814G

OCC Emblazon 854E
OCC JUANADA 664R
OCC Juanada 775C

Act. BW	71
Adj. WW	ET
CED	2
BW	2.3
WW	48
YW	77
Milk	20
\$W	45.01
\$EN	10.99

- Son of the growthy, muscular Duff Basic Instinct
- 26 & 27 are full flush brothers
- Their dam, 664R, is thick, deep, and sound
- Basic Instinct sires eye appealing cattle

Lot 27 RECC BASIC 501BI

Angus • 1/26/2015 • Safe for Cows

OCC Missing Link 830M
DUFF BASIC INSTINCT 650I
OCC Dixie Erica 814G

OCC Emblazon 854E
OCC JUANADA 664R
OCC Juanada 775C

Act. BW	84
Adj. WW	ET
CED	2
BW	2.3
WW	48
YW	77
Milk	20
\$W	45.01
\$EN	10.99

- Showy fronted, thick butted Basic Instinct son
- His Emblazon dam is a model cow
- Expect these two flush brothers to make solid females
- Udder quality and fleshing ease will be top notch

RECC 2-YEAR-OLD ANGUS BULLS

Lot
28

RECC DASH 519

Angus • 3/29/2015 • **** Heifer Bull

Sitz Upward 307R
SITZ DASH 10277
Sitz Everelda Entense 2665
OCC Missing Link 830M
TF MISSING LINK 124
TF Missing Link 804

Act. BW	68
Adj. WW	579
CED	10
BW	-1.1
WW	48
YW	77
Milk	17
\$W	58.31
\$EN	8.94

- Sure fire heifer bull with 68 lb. BW
- Wedge fronted, thick ended Dash son
- Dam is a steady, proven producer
- Keep the daughters of this bull

Lot
30

RECC DASH 504

Angus • 3/7/2015 • **** Heifer Bull

Sitz Upward 307R
SITZ DASH 10277
Sitz Everelda Entense 2665
Duff Body Builder
RECC BODY BUILDER 309
TF Missing Link 801

Act. BW	71
Adj. WW	598
CED	10
BW	0.8
WW	40
YW	73
Milk	22
\$W	53.21
\$EN	13.41

- Calving ease Dash son
- Out of a stout, fancy Body Builder daughter
- Should make thick steers and "keeper" heifers
- Out of a solid, consistent cow family

Lot
29

RECC DASH 503

Angus • 3/12/2015 • ** Large-Framed Heifer Bull

Sitz Upward 307R
SITZ DASH 10277
Sitz Everelda Entense 2665
RECC Haysaver 109
RECC HAYSAVER 307
TF Juanada 107

Act. BW	79
Adj. WW	619
CED	11
BW	0.2
WW	44
YW	69
Milk	18
\$W	52.67
\$EN	21.39

- Another good Dash son; they are consistently good
- Out of a broody, moderate 2-year-old
- Dam is double bred Paxton/Emblazon
- He should make some excellent daughters

Lot
31

RECC DASH 519

Angus • 3/12/2015 • **** Heifer Bull

Sitz Upward 307R
SITZ DASH 10277
Sitz Everelda Entense 2665
Duff Body Builder
RECC BODY BUILDER 315
TF Manchester 733

Act. BW	76
Adj. WW	601
CED	11
BW	-0.6
WW	43
YW	76
Milk	16
\$W	49.87
\$EN	16.70

- Another Dash/ Body Builder
- Calving ease deluxe
- This cow family runs deep with super females
- Sleep easy calving heifers; find these Dash sons



LOT 29

Lot
32

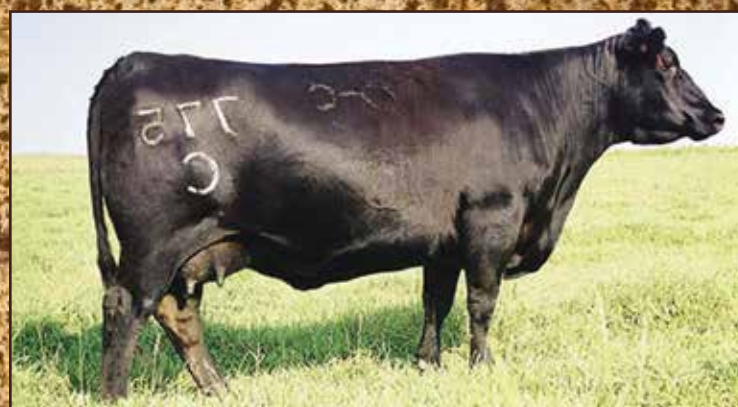
RECC DASH 518

Angus • 3/31/2015 • **** Heifer Bull

Sitz Upward 307R
SITZ DASH 10277
Sitz Everelda Entense 2665
OCC Missing Link 830M
TF MISSING LINK 918
TF Manchester 627

Act. BW	81
Adj. WW	553
CED	11
BW	-0.3
WW	41
YW	70
Milk	19
\$W	35.69
\$EN	6.97

- Calving ease Dash/ Missing Link son
- Sleep all night calving ease (CED +11)
- Dam is a super uddered, easy fleshing mama
- Generations deep calving ease genetics



OCC JUANDA 775C - MATERNAL GRANDDAM OF 26 & 27

Lot
33

RECC CHISUM 511

Angus • 4/2/2015 • Safe for Cows

S Alliance 3313
S CHISUM 6175
S Gloria 464
OCC Eureka 865E
TF DIXIE ERICA 807
OCC Dixie Erica 806J

Act. BW	88
Adj. WW	576
CED	8
BW	1.9
WW	49
YW	77
Milk	23
\$W	44.45
\$EN	6.37

- Our lone Chisum son this year
- We chose Chisum to add performance, muscle, and docility
- We calved our first Chisum daughters this year; they have done a great job
- His Eureka dam is an ET product; she has excellent udder quality

RECC 2-YEAR-OLD ANGUS BULLS

Lot
34

RECC FORTUNE 509

Angus • 4/2/2016 • Safe for Cows

Sinclair Emulate 7XT28
SINCLAIR FORTUNATE SON
Sinclair Blackbird 2P8 7079
Sitz Alliance 6595
TF MISS KATEE 209
TK Miss Katee 82

Act. BW	84
Adj. WW	591
CED	3
BW	2.9
WW	52
YW	91
Milk	22
\$W	63.11
\$EN	1.23

- Outcross pedigree to any 6807/Emblazon
- Look for Fortunate Son to add performance without increasing frame
- His dam, 209, is now 14 years old; fertility, soundness, longevity
- Maternal excellence in this pedigree



SINCLAIR FORTUNATE SON

Lot
37

RECC INDUSTRY 517

Angus • 4/1/2015 • ** Large-Framed Heifer Bull

Connealy Industry 5634
CTR INDUSTRY 004
CTR Barbel 5915
OCC Remarkabull 937R
LIMESTONE DIXIE ERICA X560
OCC Dixie Erica 623P

Act. BW	81
Adj. WW	527
CED	5
BW	1.6
WW	31
YW	55
Milk	15
\$W	18.81
\$EN	18.53

- Big middled, high capacity Connealy Industry grandson
- Industry is a big bodied Freightliner son
- This pedigree will make outstanding females
- His dam is super stout and easy fleshing



CTR INDUSTRY 004

Lot
35

RECC GAME DAY 502GD

Angus • 1/31/2015 • **** Heifer Bull

Boyd New Day 8005
GDAR GAME DAY 449
GDAR Miss Wix 474
OCC Emblazon 854E
OCC JUANADA 664R
OCC Juanada 775C

Act. BW	81
Adj. WW	ET
CED	8
BW	0.6
WW	43
YW	78
Milk	23
\$W	57.80
\$EN	18.42

- Exciting Game Day/664R flush brothers as lot 36 & 37
- These bulls are stout made, but still possess great structures
- Calving ease, early growth, maternal goodness
- Game Day is a leader in \$Wean EPD, measuring all maternal traits



Lot
36

RECC GAME DAY 501GD

Angus • 1/30/2015 • **** Heifer Bull

Boyd New Day 8005
GDAR GAME DAY 449
GDAR Miss Wix 474
OCC Emblazon 854E
OCC JUANADA 664R
OCC Juanada 775C

Act. BW	80
Adj. WW	ET
CED	8
BW	0.6
WW	43
YW	78
Milk	23
\$W	57.80
\$EN	18.42

- Both of these Game Day sons are top notch
- Game Day passes length, depth, and a stout hip
- The Juanada cow line produced the famed OCC Anchor bull
- 4 star calving ease in this pair



LOT 36

RECC 2-YEAR-OLD ANGUS BULLS

Lot
38

RECC MISSING LINK 504ML

Angus • 2/10/2015 • ★★ Large-Framed Heifer Bull

OCC Headliner 661H
OCC MISSING LINK 830M
OCC Dixie Erica 946K

GAR Grid Maker
R ALCORNS GRID MAKER T27
R Alcorns Heartland K4

Act. BW	79
Adj. WW	ET
CED	6
BW	0.7
WW	42
YW	69
Milk	22
\$W	47.09
\$EN	12.87

- First of three stout Missing Link sons
- An ET product, Lot 38 has tremendous spring of rib
- His dam was a thick, clean made Grid Maker cow
- Missing Link has made a positive impact on our operation



LOT 38



Phone (402) 781-9378

Fax (402) 781-9379

www.GPLC-Inc.com

Ki Fanning, Ph.D.

Luke Miller, M.S.

Dan Larson, Ph.D.

Zeb Prawl, M.S.

Jeremy Martin, Ph.D.

GPLC offers complete beef cattle nutritional consulting by professionals with background in, understanding of, and continued investment within the beef industry.

Turning Science Into Money

Lot
39

RECC MISSING LINK 505ML

Angus • 2/1/2015 • ★★ Large-Framed Heifer Bull

OCC Headliner 661H
OCC MISSING LINK 830M
OCC Dixie Erica 946K

OCC Emblazon 854E
OCC JUANADA 664R
OCC Juanada 775C

Act. BW	87
Adj. WW	ET
CED	6
BW	0.7
WW	42
YW	69
Milk	22
\$W	47.09
\$EN	12.87

- Missing Link/Emblazon/EXT = Maternal power
- This flush will produce solid steers and great heifers
- This bull's recipient dam didn't milk well, but he's caught up
- Any of these sons of 664R will produce the right kind

Lot
40

RECC MISSING LINK 508ML

Angus • 2/4/2015 • ★★ Large-Framed Heifer Bull

OCC Headliner 661H
OCC MISSING LINK 830M
OCC Dixie Erica 946K

OCC Emblazon 854E
OCC JUANADA 664R
OCC Juanada 775C

Act. BW	68
Adj. WW	ET
CED	6
BW	0.7
WW	42
YW	69
Milk	22
\$W	47.09
\$EN	12.87

- Missing Link ET son out of 664R
- Deep made, smooth moving
- Our Missing Link daughters are the real deal
- His granddam, 775C, has produced over \$100,000 worth of progeny



LOT 40

All Rivers Edge Cattle Co. & Spitoon Ranch
promotional materials handled by



**Chrisman
Cattle Services
Print Design**

www.chrismancattleservices.com

kchrisman@chrismancattleservices.com

Find us on Facebook!

RECC 2-YEAR-OLD SIMANGUS BULLS



LSF BIG SKY 9040W

Lot 43 RECC TRINITY 548

62%AN, 38%SM • 3/29/2015 • Safe for Cows

Hooks Shear Force 38K
HOOKS TRINITY 9T
Hooks Pearl 22-P
OCC Kansas 896P
TF KANSAS 1102
TF Alliance 6306

- Long made, thick, big footed red Trinity son
- He has an extra quiet disposition
- His dam is by our former herdsire, Kansas, who passed on tons of muscle and bone
- We really like our Trinity daughters

Act. BW	83
BW Ratio	104
WW	642
WW Ratio	102
YW	921
YW Ratio	102

Lot 41 RECC BIG SKY

Red Angus • 3/10/2015 • ***** Heifer Bull

Feddes Big Sky R9
LSF BIG SKY 9040W
LSF Cover Girl LA414 T7157
Feddes Big Sky
IDRA BIG SKY 103
IDRA Canyon

Act. BW	77
BW Ratio	96
WW	634
WW Ratio	101
YW	951
YW Ratio	105

- Big, stout made Red Angus heifer bull
- His dam came from the Daigger program in North Platte
- He is built like his mama, long, thick, and wide
- Double bred to Big Sky, he can be registered

Lot 44 RECC TRINITY 572

50%AN, 38%SM, 12%HH • 3/28/2015 • Safe for Cows

Hooks Shear Force 38K
HOOKS TRINITY 9T
Hooks Pearl 22-P
OCC Homer 650H
TF HOMER 646
TF Baldy 422

- Bigger framed, long spined, big hipped red blaze faced bull
- This bull will pass big time early growth
- His dam is going on 13 years old, she has many productive years ahead of her
- He has caught the eye of several that have seen the bulls

Act. BW	86
BW Ratio	108
WW	671
WW Ratio	107
YW	911
YW Ratio	101

Lot 42 RECC TRINITY 537

62%AN, 38%SM • 3/31/2015 • ** Large-Framed Heifer Bull

Hooks Shear Force 38K
HOOKS TRINITY 9T
Hooks Pearl 22-P
OCC Manchester 855M
TF MANCHESTER 1018
TF Echelon 8003

Act. BW	78
BW Ratio	97
WW	592
WW Ratio	94
YW	894
YW Ratio	100

- Thick made, sharp, showy red Trinity son
- We thought enough of this bull to use him on our cows this summer
- Out of a super uddered Manchester daughter
- Outstanding Red SimAngus genetics

Lot 45 RECC TRINITY 545

62% AN, 38% SM • 3/30/2015 • ***** Heifer Bull

Hooks Shear Force 38K
HOOKS TRINITY 9T
Hooks Pearl 22-P
SAV Final Answer 0035
TF FINAL ANSWER 1008
TF Manchester 6201

- Black Trinity son that can be turned out on heifers
- Clean made, smooth shouldered
- His Final Answer dam is stout and deep
- Add some heterosis in your heifer calf crop

Act. BW	72
BW Ratio	90
WW	612
WW Ratio	97
YW	982
YW Ratio	98



LOT 42

Lot 46 RECC TRINITY 546

62% AN, 38% SM • 3/25/2015 • ***** Heifer Bull

Hooks Shear Force 38K
HOOKS TRINITY 9T
Hooks Pearl 22-P
Connealy Thunder
TF THUNDER 2005
TF Manchester 6211

- Standout SimAngus bull: thick made, moderate frame
- He passed all the tests: calved small, then performed with the best
- His dam is a deep bodied, thick made Connealy Thunder cow
- Find him on sale day

Act. BW	75
BW Ratio	94
WW	698
WW Ratio	111
YW	976
YW Ratio	108

RECC 2-YEAR-OLD SIMANGUS BULLS

Lot 47 **RECC TRINITY 520**
62% AN, 38% SM • 4/3/2015 • ★★ Large-Framed Heifer Bull

Hooks Shear Force 38K HOOKS TRINITY 9T Hooks Pearl 22-P TF Legend 708 TF LEGEND 0017 TF Anchor 8031	Act. BW 84 BW Ratio 105 WW 722 WW Ratio 115 YW 995 YW Ratio 110
--------------------------------------------------------------------------------------------------------------------	--------------------------------------------------------------------------------

- Another standout black Trinity
- He weaned at 722 lbs., his dam weighed 1061 lbs. this fall; 68% of her body weight
- The complete package: length, thickness, quiet disposition
- Excels in every category in the industry

Lot 50 **RECC TRINITY 550**
62% AN, 38% SM • 4/2/2015 • Safe for Cows

Hooks Shear Force 38K HOOKS TRINITY 9T Hooks Pearl 22-P TF Alliance 215 TF ALLIANCE 7404 TF Visegrip 404	Act. BW 84 BW Ratio 105 WW 687 WW Ratio 109 YW 968 YW Ratio 107
-------------------------------------------------------------------------------------------------------------------------	--------------------------------------------------------------------------------

- Wedge fronted, thick butted Trinity
- We used this bull on a group of cows this summer
- His dam weans a big one every year
- Quiet disposition

Lot 48 **RECC TRINTY 547**
62% AN, 38% SM • 3/27/2015 • Safe for Cows

Hooks Shear Force 38K HOOKS TRINITY 9T Hooks Pearl 22-P OCC Manchester 855M TF MANCHESTER 6216 TF BAR EXT 413	Act. BW 81 BW Ratio 101 WW 716 WW Ratio 114 YW 958 YW Ratio 106
------------------------------------------------------------------------------------------------------------------------------	--------------------------------------------------------------------------------

- Big framed, long necked Trinity SimAngus bull
- His dam, 6216, has been a tremendous producer
- Tons of maternal power in this bull
- One of my favorite SimAngus bulls

Lot 51 **RECC TRINTY 551**
62% AN, 38% SM • 3/24/2015 • ★★ Large-Framed Heifer Bull

Hooks Shear Force 38K HOOKS TRINITY 9T Hooks Pearl 22-P OCC Echelon 857E TF ECHELON 8008 TF Manchester 6202	Act. BW 75 BW Ratio 94 WW 622 WW Ratio 99 YW 904 YW Ratio 100
----------------------------------------------------------------------------------------------------------------------------	------------------------------------------------------------------------------

- Moderate sized, calving ease Trinity son
- Dam brings generations deep of calving ease
- Look to him for a different calving ease option
- Maternal genetics run deep

Lot 49 **RECC TRINTY 549**
62% AN, 38% SM • 4/3/2015 • Safe for Cows

Hooks Shear Force 38K HOOKS TRINITY 9T Hooks Pearl 22-P TF Alliance 215 TF ALLIANCE 7105 TF Westwind 204	Act. BW 86 BW Ratio 108 WW 582 WW Ratio 92 YW 816 YW Ratio 90
-------------------------------------------------------------------------------------------------------------------------	------------------------------------------------------------------------------

- Smooth made Trinity son
- Low-input genetics
- Dam is a 1108 lb. cow at 9 years old
- She always weans a big percentage of her bodyweight

Lot 52 **RECC TRINTY 565**
62% AN, 38% SM • 4/2/2015 • Safe for Cows

Hooks Shear Force 38K HOOKS TRINITY 9T Hooks Pearl 22-P TF Alliance 215 TF ALLIANCE 8102 TF Manchester 6205	Act. BW 80 BW Ratio 100 WW 644 WW Ratio 102 YW 963 YW Ratio 106
----------------------------------------------------------------------------------------------------------------------------	--------------------------------------------------------------------------------

- Long necked, long spined Trinity
- He would work great on a set of Angus cows
- Very similar to Lot 53 - They'd make a great pair
- Out of a hard working range cow



LOT 46



LOT 52

RECC 2-YEAR-OLD SIMANGUS BULLS

Lot
53

RECC TRINITY 553

62% AN, 38% SM • 4/4/2015 • Safe for Cows

Hooks Shear Force 38K
HOOKS TRINITY 9T
Hooks Pearl 22-P
TF Alliance 215
TF ALLIANCE 8103
TF Manchester 6208

Act. BW	91
BW Ratio	113
WW	658
WW Ratio	105
YW	921
YW Ratio	102

- Fits the same mold as Lot 52
- These Trinity sons will add length
- Dam is a consistent producer
- ¼ brother to Lot 52



BENFIELD REALITY 6211

Lot
56

RECC SUPERMAN 556

75% AN, 25% SM • 4/27/2015 • Safe for Cows

Mr NLC Superior S6018
TF SUPERIOR
TF BAR Ext 415
OCC Ultra Good 686U
TF ULTRA GOOD 0041
TF Echelon 8004

Act. BW	82
BW Ratio	102
WW	583
WW Ratio	92
YW	901
YW Ratio	100

- SimAngus bull with lots of eye appeal; he's turned some heads
- Wedge fronted with muscle that carries deep into his rear quarter
- He has a soft disposition
- Dam is a model Angus cow



LOT 56

Lot
54

RECC REALITY 554

75% AN, 25% SM • 3/23/2015 • Safe for Cows

S Chisum 6175
BENFIELD REALITY 6211
Benfield Edella 1105

Hooks Shear Force 38K
TF SHEAR FORCE 2043
TF Homer 9013

Act. BW	86
BW Ratio	108
WW	660
WW Ratio	105
YW	884
YW Ratio	98

- ¼ Simmental son of Benfield Reality
- Reality is a son of S Chisum, who sires muscle and performance
- His dam by Hooks Shear Force, is a powerhouse
- He has loads of capacity; he'll make great feeder steers

Lot
57

RECC SUPERMAN 557

50% AN, 50% SM • 4/19/2015 • Safe for Cows

Mr NLC Superior S6018
TF SUPERIOR
TF BAR Ext 415
Ellingson Legacy M229
TF OLIE 1028
TF 616 6230

Act. BW	84
BW Ratio	105
WW	590
WW Ratio	93
YW	870
YW Ratio	97

- Half blood SimAngus bull
- Moderate framed and thick
- Dam is a smaller framed Olie daughter
- The females by him will be the keeping kind

Lot
55

RECC REALITY 555

75% AN, 25% SM • 3/29/2015 • Safe for Cows

S Chisum 6175
BENFIELD REALITY 6211
Benfield Edella 1105

Powerline Dream On 164
TF DREAM ON 1165
TF Homer 616

Act. BW	84
BW Ratio	105
WW	607
WW Ratio	97
YW	849
YW Ratio	94

- Low percentage Simmental to maintain percentage cows
- Moderate framed, wide based
- His dam is sired by Dream On son with tremendous base width
- Should make steers and heifers equally well

Lot
58

RECC SUPERMAN 560

75% AN, 25% SM • 4/19/2015 • ★★ Large-Framed Heifer Bull

Mr NLC Superior S6018
TF SUPERIOR
TF BAR Ext 415
OCC Ultra Good 686U
TF ULTRA GOOD 1042
TF Homer 9007

Act. BW	63
BW Ratio	79
WW	606
WW Ratio	96
YW	873
YW Ratio	97

- ¼ brother to Lot 56
- Calving ease potential
- Wedge fronted, but thick butted
- Dam is a solid Ultra Good daughter

RECC 2-YEAR-OLD SIMANGUS BULLS

Lot 59 RECC SUPERMAN 562
75% AN, 25% SM • 4/27/2015 • Safe for Cows

Mr NLC Superior S6018 TF SUPERIOR	Act. BW	93
TF BAR Ext 415	BW Ratio	117
TF Manchester TF MANCHESTER 1081	WW	612
TF Alliance 8082	WW Ratio	97
	YW	919
	YW Ratio	102

- Superior grandson by a Manchester cow
- ¾ brother to Lot 60
- His sire is a son of Mr NLC Superior, a Simmental powerhouse
- He has muscle bred in his genes

Lot 62 RECC SUPERMAN 552
75% AN, 25% SM • 4/29/2015 • ★★ Large-Framed Heifer Bull

Mr NLC Superior S6018 TF SUPERIOR	Act. BW	73
TF BAR Ext 415	BW Ratio	91
OCC Echelon 857E TF ECHELON 8003	WW	584
TF Manchester 6204	WW Ratio	92
	YW	920
	YW Ratio	102

- SimAngus bull with calving ease potential
- Dam carries several generations of calving ease
- She is a moderate sized, super uddered cow
- Maternal making genetics

Lot 60 RECC SUPERMAN 563
75% AN, 25% SM • 4/16/2015 • Safe for Cows

Mr NLC Superior S6018 TF SUPERIOR	Act. BW	79
TF BAR Ext 415	BW Ratio	99
TF Manchester TF MANCHESTER 1137	WW	665
TF Alliance 6306	WW Ratio	106
	YW	855
	YW Ratio	95

- High performance, heavy muscled Superior grandson (1/4 SM, 3/4 AN)
- Superior and Manchester both sire big time muscle
- A ¾ brother to Lot 59
- Dam weans a big calf but keeps her flesh well

Lot 63 RECC SUPERMAN 558
75% AN, 25% SM • 5/11/2015 • Safe for Cows

Mr NLC Superior S6018 TF SUPERIOR	Act. BW	81
TF BAR Ext 415	BW Ratio	101
OCC Ultra Good 686U TF ULTRA GOOD 0043	WW	586
TF Alliance 8134	WW Ratio	92
	YW	842
	YW Ratio	94

- Another Superior/Ultra Good combination
- Like his ¾ brothers, he's long necked and thick butted
- Dam is a big bodied, deep ribbed 6-year-old
- Expect excellent females by this bull

Lot 61 OAKLEYS OLAF 544
50% AN, 50% SM • 4/16/2015 • ★★ Large-Framed Heifer Bull

Mr NLC Superior S6018 TF SUPERIOR	Act. BW	63
TF BAR Ext 415	BW Ratio	79
OCC Manchester 855M OAKLEY'S ELSA 2001	WW	593
Quinn 6367	WW Ratio	93
	YW	837
	YW Ratio	93

- SimAngus bull raised by Oakley's cow
- Half blood Simmental; another Superior/Manchester combo
- Dam is easy fleshing and broody
- Calving ease potential

Lot 64 RECC SUPERMAN 564
62% AN, 38% SM • 4/24/2015 • Safe for Cows

Mr NLC Superior S6018 TF SUPERIOR	Act. BW	92
TF BAR Ext 415	BW Ratio	115
Powerline Dream On 164 TF DREAM ON 1174	WW	614
TF Alliance 8134	WW Ratio	98
	YW	976
	YW Ratio	108

- Big framed, big performing 3/8 Simmental Superior son
- Use him to maintain SimAngus cows, or inject some heterosis into some Angus cows
- Dream On females are highly regarded in the Simmental breed
- Dam is a medium framed, super uddered young cow



LOT 58

Lot 65 RECC SUPERMAN 561
75% AN, 25% SM • 5/15/2015 • ★★ Large-Framed Heifer Bull

Mr NLC Superior S6018 TF SUPERIOR	Act. BW	71
TF BAR Ext 415	BW Ratio	89
TF Alliance 215 TF ALLIANCE 8134	WW	604
TF Cow	WW Ratio	96
	YW	888
	YW Ratio	98

- Low birth weight Superior by a stout made Alliance bred cow
- These SimAngus bulls are out of the top end of 400+ commercial cows
- Younger bull than should find a place breeding some heifers
- Our SimAngus females are excelling in our program

RECC 2-YEAR-OLD SIMANGUS BULLS

Lot
66

RECC SUPERMAN 573

75% AN, 25% SM • 4/28/2015 • Safe for Cows

Mr NLC Superior S6018
TF SUPERIOR
TF BAR Ext 415
OCC Eureka 865E
TF EDELLA 932
TF VRD Edella 212

Act. BW	78
BW Ratio	98
WW	641
WW Ratio	102
YW	898
YW Ratio	100

- Superior son out of a registered Angus cow by OCC Eureka
- She is long bodied; she gets it from her mama who was sires by VRD
- He has a moderate frame and a wide top
- Should make some long lasting range cows

Lot
69

RECC SUPERMAN 579

75% AN, 25% SM • 4/16/2015 • Safe for Cows

Mr NLC Superior S6018
TF SUPERIOR
TF BAR Ext 415
GAR Enhancer 5365
TF ENHANCER 6241
TF Visegrip 404

Act. BW	84
BW Ratio	105
WW	618
WW Ratio	98
YW	876
YW Ratio	97

- Superior son by a steady 10-year-old Enhancer daughter
- Enhancer (Ambush/5522) has left us some outstanding daughters
- He had lots of maternal goodness in his pedigree

Lot
67

RECC SUPERMAN 562

75% AN, 25% SM • 5/3/2015 • ★★ Large-Framed Heifer Bull

Mr NLC Superior S6018
TF SUPERIOR
TF BAR Ext 415
OCC Manchester 855M
TF MANCHESTER 1074
TF Visegrip 610

Act. BW	63
BW Ratio	79
WW	701
WW Ratio	111
YW	905
YW Ratio	100

- Low birth (63 lbs.), high growth Superior son
- Weaned off at 701 lbs.; dam weaned 59% of her body weight
- Our Manchester cows are a perfect fit for these SimAngus genetics
- These Superior sons are peas in a pod

Lot
70

RECC SUPERMAN 581

75% AN, 25% SM • 4/24/2015 • Safe for Cows

Mr NLC Superior S6018
TF SUPERIOR
TF BAR Ext 415
OCC Anchor 771A
TF ANCHOR 8033
TF Visegrip 607

Act. BW	80
BW Ratio	100
WW	602
WW Ratio	96
YW	864
YW Ratio	95

- Last of our Superior sons
- His dam is by OCC Anchor, famed for making long lasting cows
- Look for this bull to make super uddered, fertile daughters

Lot
68

RECC SUPERMAN 570

75% AN, 25% SM • 4/27/2015 • Safe for Cows

Mr NLC Superior S6018
TF SUPERIOR
TF BAR Ext 415
TF Alliance 215
TF ALLIANCE 8082
TF Cow

Act. BW	91
BW Ratio	113
WW	673
WW Ratio	107
YW	903
YW Ratio	100

- Another Superior by an Alliance bred cow
- We focus on making great cows that do the job every year
- Weaned at 673 pounds; Ratio 107

Lot
71

RECC UNITED 590

50% AN, 50% SM • 3/27/2015 • Safe for Cows

TNT Tuition U238
W/C UNITED 956Y
Miss Werning 956W
Triple C Invasion
TF INVASION 8047
TF Manchester 6215

Act. BW	88
BW Ratio	110
WW	589
WW Ratio	94
YW	945
YW Ratio	105

- Half Blood SimAngus by popular W/C United
- United is a breed leading performance bull
- Look for this big framed bull to make get feeder steers
- He's an outcross the Legacy/Shear Force/Superior line



DATA DEFINITIONS

DOLLAR ENERGY VALUE

\$EN

The somewhat new and often ignored dollar value indicates the differences in cow energy requirements. Most seedstock producers don't advertise their \$EN values because high growth, high milk, large maturing cattle require more feed. How many 1,400+ lbs. cows do you think most seedstock producers have?

EXPLANATION OF \$VALUES

In this catalog, we have listed the basic EPDs as well as the \$Wean and \$Energy values. Below is an explanation of the values. We feel that commercial cow/calf producers should focus more on these traits. Cow feed costs are the single largest cost in any operation. Why don't we as an industry focus on cattle that can wean great calves on less feed due to moderate, mature sizes and adequate, but not excessive, milk? Extra cow size and extra milk is not free.

COW ENERGY VALUE (\$EN)

A Cow Energy Value (\$EN) is available to assess differences in cow energy requirements, expressed in dollars per cow per year, as an expected dollar savings difference in future daughters of sires. A larger value is more favorable when comparing two animals (more dollars saved on feed energy expenses). Components for computing the cow \$EN savings difference include lactation energy requirements and energy costs associated with differences in mature cow size.

If Cow A has a \$Energy Value of +17.89, and Cow B has a Value of +4.34, the estimated difference in feed costs would be 13.55. Now if you use bulls with those values and retain females out of them, how many dollars would be the difference to you?

WEANED CALF VALUE (\$W)

Weaned Calf \$Value (\$W) quantifies four primary economic impact areas:

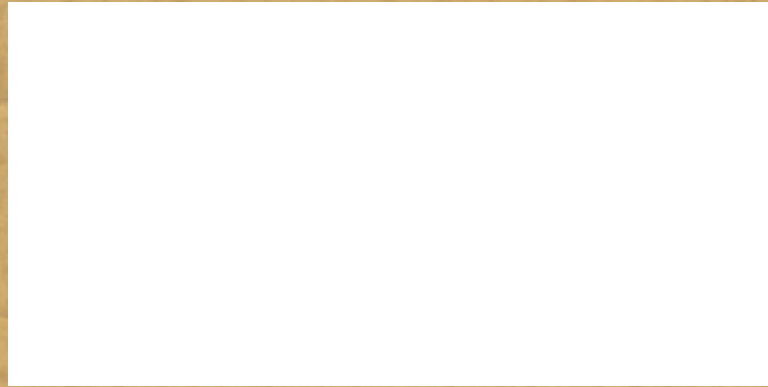
1. Birth Weight - birth weight influences on calf death losses related to dystocia, weaned calf crop percentage, and resulting revenue per cow.
2. Weaning Weight - direct growth impact on weaning weight revenue (pre-weaning growth and pounds of calf sold) and energy requirements and related costs necessary to support pre-weaning calf growth.
3. Maternal Milk - revenue from calf pre-weaning growth and pounds of calf sold as influenced by varying cow milk levels, and costs related to lactation energy requirements.
4. Mature Cow Size - expense adjustments are made for maintenance energy as related to differing mature cow size, including mathematical linkages between mature weight & yearling weight.

The impact areas are combined into a bio-economic value expressed in dollars per head assigned to Angus genetics from birth through weaning.

\$Values only have meaning when used in comparing the relative merit or ranking of two individuals. \$W provides the expected dollar-per-head difference in future progeny pre-weaning performance in a multi-trait fashion, within a typical U.S. beef cowherd. If Bull A has a \$W of +25.00 and Bull B has a \$W of +15.00, and these sires were randomly mated to a comparable set of females and the calves were exposed to the same environment, and a normal number of replacement females were saved from both sires, on average you could expect Bull A's progeny to have a +10.00 per head advantage in pre-weaning value over Bull B's progeny ($25.00 - 15.00 = +10.00$ per head). As with any \$Value, \$W only has meaning when used in comparing the relative merit or ranking of two individuals.

NOTES

RIVERS EDGE CATTLE CO
SETH & COURTNEY TERRELL
708 SHELTON STREET
CHADRON, NE 69337



RIVERS EDGE CATTLE COMPANY & SPITTOON RANCH INAUGURAL FALL BULL SALE

DECEMBER 13, 2016

SETH TERRELL'S CELL
308.430.0705

MATT PETER'S CELL
308-360-2736

