


RIVERS EDGE CATTLE COMPANY
& SPITTOON RANCH
7TH ANNUAL FALL BULL SALE

DECEMBER 13, 2022



31 Angus & 28 Sim Angus
Coming 2-Year-Old Virgin Bulls

12:00 PM (MST) - Gordon Livestock Auction - Gordon, NE

7TH ANNUAL BULL SALE



Rivers Edge Cattle Company is pleased to welcome you all to our Seventh Annual Fall Bull Sale. 2022 has brought us widespread drought, rising feed costs, a dramatic rise in interest rates/inflation, and supply chain worries. Despite these challenges, I'm optimistic for our future. Cow numbers are significantly lower, and projections look very profitable, especially if we can be blessed with moisture.

We focus solely on raising quality cattle that produce efficiently on minimal harvested forage, starting with heifer development. Our heifers are developed to transition into hardy range cows that don't need lots of pampering to survive. These cows graze as long as possible on corn stalks in the fall and winter, and typically only get fed hay shortly before calving begins and then up to summer grass. We don't mess with udder, disposition, or mothering issues. As labor becomes a larger issue in our industry, we feel that cattle that do more for themselves are more economically feasible. We raise cows that work for themselves, and bulls that will work for you.

We are once again proud to partner with Spitoon Ranch for our Seventh Annual Fall Bull Sale. Our programs mirror each other in many ways, right down to the way we grow our bulls. We are pleased to bring a group of aged bulls that have been properly developed to ensure soundness, libido, and longevity. These bulls are selected with a strong emphasis on maternal traits and those traits that most matter to commercial cattlemen.

We appreciate our past customers and look forward to meeting new ones. We stand by our bulls 100% and have a full guarantee on them through the first breeding season. Consider that these bulls will be able to cover more cows than yearling bulls, as well as having a chance to adapt to your ranch well before the breeding season.

Please let us know if we can assist you in any way, including marketing your cattle.

Thank you for your support and we hope to see you December 13.

Seth, Courtney, Oakley, and Landrey Terrell

2219 HIDDEN VALLEY RD • CHADRON, NE 69337 • 308-430-0705

WWW.RIVERSEDECATTLE.COM



Spitoon Ranch is pleased to welcome everyone to our 7th Annual Fall Bull Sale. We thought 2021 was a challenge, then here came 2022. We, as well as many of you, are looking forward to some much needed moisture.

We have a great selection of bulls again this year. They did very well in the dry lot until mid-July, then we turned them on what little grass we had this summer until November 1. This set of bulls mirrors Rivers Edge bulls with length, width, depth of rib, and good disposition. Spitoon Ranch strives to maintain a consistent cow herd that produces calving ease, good disposition, and is structurally sound. Great weaning and yearling weights from both bulls and heifers shows our diligence in our cow herd is paying off. Spitoon cows must survive in the real world with our staple program: grass in the summer, hay and liquid protein in the winter. No creep feed for the calves.

It's been a great partnership with Seth and Courtney at Rivers Edge because our programs and philosophies are very similar; we raise offspring that will work for the cattlemen. We both have a great offering of bulls this year and I'm excited to see everyone at the sale Dec. 13.

The sale starts earlier this year at 12 noon, so be sure to come early to look at the bulls and have a meal on us before the sale.

Thank you,
Matt Peters and Family

5803 270TH LANE • RUSHVILLE, NE 69360 • 308-360-2736

WWW.SPITTOONRANCH.COM

SALE INFO

RIVERS EDGE CATTLE CO. & SPITTOON RANCH INC. BULL SALE

December 13, 2022 • 12:00 PM MST

Gordon Livestock Auction • 108 Foch Street • Gordon, NE • 308-282-1171
www.gordonlivestock.com

RIVERS EDGE & SPITTOON BULLS LOCATION

- Spitoon bulls can be viewed until December 12 at the Spitoon Ranch 4 miles south of Clinton on 270th Ln.
- Rivers Edge bulls can be viewed until December 12. 13 miles south of Hay Springs on Hwy 87. They are just off the highway at mile marker 31.

AUCTIONEER

Dace Harper - 605-515-1535

SALE REPRESENTATIVES

Gordon Livestock Auction - 308-282-1171

Tom & Patsy Tines - 605-441-3884

American Angus Association, Levi Landers - 308-730-1396

Caleb Peters - 308-360-3905 • Jacob Tejral - 402-937-5449

TERMS AND CONDITIONS

All bulls sell under the Standard Terms and Conditions established by the American Angus Association.

GENETIC DEFECT GUARANTEE

None of the bulls in the Rivers Edge Cattle Co. and Spitoon Ranch offering will be carriers or potential carriers of Arthrogryposis Multiplex (Curly Calf), Neuropathic Hydrocephalus, or Fawn Calf (CA).

FERTILITY

All bulls will pass a breeding soundness exam prior to the sale.

STORM DATE

If inclement weather is a concern, please contact Matt, Seth, either web site, or Gordon Livestock for any changes.

ABSENTEE BIDDING

We offer two ways to buy for those unable to attend.

- Pre-register and bid through cattleusa.com (please do so at least 24 hours in advance). Contact Gordon Livestock with any questions on this, or see information below.
- We will have representatives able to handle your bidding at the sale on the phone or through prior arrangements.

SALE WILL BE
BROADCAST
ON CATTLE USA



WWW.CATTLEUSA.COM
(580) 237-4600

DELIVERY OPTIONS

Option 1: Take your bull home the day of the sale or the Wednesday after the sale and receive \$250 off the purchase price of each bull.

Option 2: We will feed the bulls and deliver them to you (free up to 250 miles) beginning March 15.

Option 3: We will feed the bulls for you until you are ready for them. You will be billed for feed at a rate of \$3.00 per day, per bull after April 15. You will be responsible for picking up your bulls.

FIRST BREEDING SEASON GUARANTEE

All bulls selling for over \$3,500 are sold with a first year breeding season guarantee (90 days after turnout). If a bull is deemed unusable, the purchaser will be given credit for 50% of the price of the bull minus salvage value. All notices must take place prior to September 1, 2023. This is not a mortality insurance policy, nor does it cover mismanagement or neglect. We do not cover injuries sustained prior to breeding season if your bull is turned out with other bulls.



**GREAT
PLAINS**
LIVESTOCK
CONSULTING
INC.

Phone (402) 781-9378

Fax (402) 781-9379

www.GPLC-Inc.com

Ki Fanning, Ph.D.

Dan Larson, Ph.D.

Luke Miller, M.S.

Zeb Prawl, M.S.

Jeremy Martin, Ph.D.

GPLC offers complete beef cattle nutritional consulting by professionals with background in, understanding of, and continued investment within the beef industry.

Turning Science Into Money

REFERENCE SIRES

MARCYS 18 WAYLON 50-8

AAA Reg. Number: 19121313

GAR-EGL Protege
BALDRIDGE WAYLON W34

Baldrige Blackcap T163

H A Image Maker 0415
MARCYS 08 PRIDE 25-8

Marcys 06 Pride 11-6

- Waylon sires calm, big bodied, massive progeny with outstanding marbling, ribeye and feedlot performance. Waylon daughters are easy doing in production under range conditions and are deep, easy fleshing cows with good udders.

CED	0
BW	3.9
WW	72
YW	106
Milk	31
\$W	72
\$EN	-18



Sire - Baldrige Waylon W34

SPITTOON RAMPAGE 851

AAA Reg. Number: 19338529

MCC Daybreak
QUAKER HILL RAMPAGE 0A36

QHF Blackcap 6E2 of4V16 4355

SR Higher Up 0073
SPITTOON HIGHER UP 326

Dixie of SV 033

- Rampage is a heavily muscled, powerfully constructed Daybreak grandson with incredible growth and performance. His EPDs offer impressive calving ease and growth. He is backed by one of the most impressive cow families in the Angus breed today.

CED	11
BW	0.1
WW	74
YW	120
Milk	22
\$W	66
\$EN	-22



Sire - Quaker Hill Rampage 0A36

RAVEN POWERBALL 53

AAA Reg. Number: 17632447

G A R Predestined
PA POWER TOOL 9108

Shamrocks Beebee Queen 3095

Hoover Dam
RAVEN EMMA E 4241

PCAR Emma E 2215

- Powerhouse individual with a great maternal design and data profile. Used heavily in the Sitz program where the daughters are coveted and his sons have been consistent sale favorites. Powerball is a more updated version of Hoover Dam with more power, capacity, and performance.

CED	11
BW	0.3
WW	58
YW	109
Milk	23
\$W	51
\$EN	-24



Raven Powerball 53

SPITTOON AMBUSH 664

AAA Reg. Number: 18609825

J R Ambush 2931
RR 2931 AMBUSH 2346

C H Dixie Erica 9378 129

HA Thick 1670
SV DIXIE 3070

SV Dixie Erica 871

- Ambush is a true beef bull with tremendous depth of body and thickness throughout. He offers excellent weaning and yearling performance. Calves are thrifty with rapid growth, extreme depth of body with a powerful hip structure and eye-catching phenotype.

CED	-6
BW	4.6
WW	43
YW	73
Milk	29
\$W	34
\$EN	6



REFERENCE SIRES

SITZ STELLAR 726D

AAA Reg. Number: 18397542

Benfield Substance 8506
MOHNEN SUBSTANTIAL 272

Mohnen Glyn Mawr Elba 1758

Connealy Final Product
SITZ PRIDE 200B

Sitz Pride 308Y

CED	3
BW	-0.3
WW	72
YW	130
Milk	20
\$M	67
\$EN	-20

- Extremely popular for lots of good reasons. Big middled, wide topped, with extra pounds; plus a proven foot quality improver. The females should be extra special: broody, deep, with excellent udders. High demand sire that covers all the bases.



Sitz Stellar 726D

HAYNES OUTRIGHT 452

AAA Reg. Number: 17925323

S A V Final Answer 0035
K C F BENNETT ABSOLUTE

Thomas Miss Lucy 5152

B/R New Day 454
HAYNES ND 454 MISS 179

HAYNES Miss Infocus 984

CED	5
BW	0.6
WW	69
YW	134
Milk	16
\$M	45
\$EN	-34

- Sound, soft made Absolute son with added length and rib. Big time performance in a moderate sized package. Dam is controlled in size, with impeccable udder quality and looks. He'll add pounds to steers and make eye appealing, broody daughters.



Haynes Outright 452

LD EMBLAZON 999

AAA Reg. Number: 16665803

D H D Traveler 6807
O C C EMBLAZON 854E

Dixie Erica of C H 1019

Rito 111 of 2536 Rito 616
SH FOREVER LADY 3124 5118

Toebben Forever Lady 3124

CED	10
BW	0.7
WW	65
YW	119
Milk	16
\$M	32
\$EN	-30

- Highest performing Emblazon son in the breed. Emblazon kind with an upgrade in performance and frame. Sons are big middled, stouter boned, and wide made. Daughters will be broody, tight uddered, with soft attitudes.



LD Emblazon 999

All Rivers Edge Cattle Co. & Spitoon Ranch
promotional materials handled by



Chrisman
Cattle Services
Print Design

www.chrismancattleservices.com

Find us on Facebook!



REFERENCE SIRES

CCR STOCKMAN 8033E

ASA Reg. Number: 3297708 • Homozygous Black, Homozygous Polled

S D S Graduate 006X
CCR WIDE RANGE 9005A
 CCR Ms Apple 9332W
 S A V Brilliance 8077
CCR MS 7322 BRILL 3370A
 CCR Ms 4045 Time 7322T

CED	5.9
BW	3.7
WW	91.1
YW	145.5
Milk	22.8
API	113.7
TI	76.2

• 2018 High Selling Bull from Cow Camp Ranch, purchased by Stockman's Source, our friends, Chrismans and Martins. Powerful growth and muscle sire that remains clean made, tight sheathed and travels freely on ideal feet and legs. Proven maternal heritage that stacks some of the breeds best including the "Apple" cow and Cowboy Cut's mother. We are on our third calf crop of Stockmans. They perform exceptionally well in all facets. Muscle, eye appeal, growth. The females have been outstanding for us. They calve easily, good mothering instincts and udder quality. Fertility has been exceptional as well.



CCR Stockman 8033E

TRAXS RUSHMORE X103

ASA Reg. Number: 2574812 • Red, Homozygous Polled

BH Tracker 998J
THSF FREEDOM 300N
 SAFN Miss Zing 02H
 LCHMN Bright Light L122L
MISS TRAX U850
 R549

CED	12.7
BW	0.3
WW	81.9
YW	129.8
Milk	10.3
API	132.6
TI	78.0

• Outcross Red Simmental pedigree. Breeds high performance, muscle, capacity, and power. Controlled on birth weight, moderate on milk. Daughters are long necked, feminine, and solid udders.



Traxs Rushmore X103

W/C UNITED 956Y

ASA Reg. Number: 2614725 • Homozygous Black, Homozygous Polled

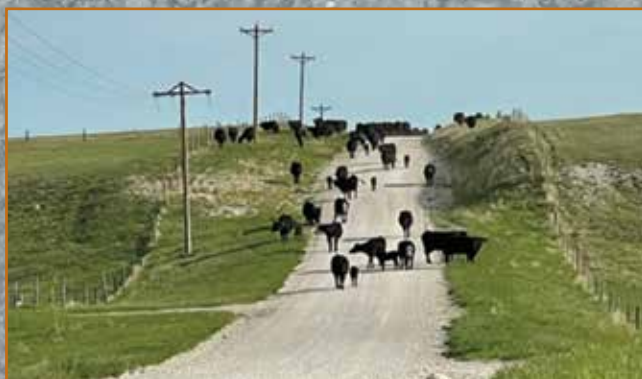
S A V Final Answer 0035
TNT TUITION U238
 TNT Miss S68
 S A V Bismarck 5682
MISS WERNING 956W
 Miss Werning 756T

CED	11.1
BW	1.2
WW	98.9
YW	162.8
Milk	19.7
API	121.1
TI	86.9

• High growth, high performance (Top 1% WW & YW) while keeping frame in check. We look for him to replace Upgrade as our go-to SimAngus sire. Massive volume, exceptional structure, and head turning phenotype. Daughters are wide based, big middled, and eye catching.



W/C United 956Y



SPITTOON 2-YEAR-OLD ANGUS BULLS

Lot 1 SPITTOON JUSTICE 113

4/8/2021 • Safe for Cows

GDAR Justice 622				
GDAR CJD JUSTICE 1717	Act. BW	ANGUS		
GDAR CJD Blackcap Lady 9774	85	#20465443		
HA In Focus 7353	Adj. WW		CED	3
SV DIXIE ERICA 1109	770		BW	1.7
SV Dixie Erica 871			WW	60
			YW	104
			Milk	29
			\$W	56
			\$EN	-15

• Large frame cow bull out of a HA In Focus cow that has always produced power. Justice 1717 sire has raised me some of my top cows.

Lot 5 SPITTOON RAMPAGE 101

3/29/2021 • ** Large-Framed Heifer Bull

Quaker Hill Rampage 0A36				
SPITTOON RAMPAGE 851	Act. BW	ANGUS		
Spittoon Higher Up 326	70	#20465435		
HA Cowboy Up 5405	Adj. WW		CED	10
SPITTOON COWBOY UP 801	751		BW	0.8
Marcys Erica 568			WW	77
			YW	127
			Milk	23
			\$W	67
			\$EN	-28

• Calving ease, long spined, heavy weaning, high performance cow bull. Dam is a moderate bodied, good uddered Cowboy Up.

Lot 2 SPITTOON JUSTICE 102

3/29/2021 • ** Large-Framed Heifer Bull

GDAR Justice 622				
GDAR CJD JUSTICE 1717	Act. BW	ANGUS		
GDAR CJD Blackcap Lady 9774	82	#20465436		
Barstow Cash	Adj. WW		CED	5
SPITTOON CASH 505	710		BW	1.8
SV Sassy 3076			WW	67
			YW	123
			Milk	25
			\$W	55
			\$EN	-24

• Deep rib, long spine. Good milk at +25. You will love Justice offspring. Very good maternal.

Lot 6 SPITTOON RAMPAGE 107

4/4/2021 • **** Heifer Bull

Quaker Hill Rampage 0A36				
SPITTOON RAMPAGE 851	Act. BW	ANGUS		
Spittoon Higher Up 326	78	#20465439		
K Bar D Joe Canada 18Y	Adj. WW		CED	10
SPITTOON JOE CANADA 615	689		BW	-0.2
SV Cloudy 3004			WW	63
			YW	103
			Milk	22
			\$W	57
			\$EN	-12

• Calving ease heifer bull with good growth, 700 lbs at weaning. Calves hit the ground with strong performance in all areas of production from day one.

Lot 3 SPITTOON STELLAR 110

4/5/2021 • **** Heifer Bull

Mohnen Substantial 272				
SITZ STELLAR 726D	Act. BW	ANGUS		
SITZ Pride 200B	72	#20466919		
Quaker Hill Rampage 0A36	Adj. WW		CED	10
SPITTOON RAMPAGE 854	615		BW	-0.9
SV Stimulus 2099			WW	61
			YW	109
			Milk	18
			\$W	49
			\$EN	-13

• Great foot quality. Thick topped and deep sided bull. Good disposition comes from both sides; his dam Rampage 854 is a sweetheart.

Lot 7 SPITTOON AMBUSH 119

4/24/2021 • Safe for Cows

RR 293I Ambush 2346				
SPITTOON AMBUSH 664	Act. BW	ANGUS		
SV Dixie 3070	90	#20465445		
GDAR CJD Justice 1717	Adj. WW		CED	-2
SPITTOON JUSTICE 625	560		BW	4.0
SV Miss Forever 3026			WW	43
			YW	82
			Milk	25
			\$W	29
			\$EN	3

• Super steer maker and you will save all the females.

Lot 4 SPITTOON RAMPAGE 106

4/3/2021 • ** Large-Framed Heifer Bull

Quaker Hill Rampage 0A36				
SPITTOON RAMPAGE 851	Act. BW	ANGUS		
Spittoon Higher Up 326	82	#20465438		
Baldrige Sledgehammer S621	Adj. WW		CED	5
MARCYS ETHELDA E 15-1	665		BW	2.3
Marcys 01 Ethelda E 82-1			WW	60
			YW	102
			Milk	26
			\$W	52
			\$EN	-14

• Great son out of a great Marcy 15-1 cow. Good width and depth of rib. This bull will sire moderate birth and steady growth.

Lot 8 SPITTOON WAYLON 121

5/3/2021 • Safe for Cows

Baldrige Waylon W34				
MARCYS 18 WAYLON 50-8	Act. BW	ANGUS		
Marcys 08 Pride 25-8	87	#20465447		
SV Thick 3097	Adj. WW		CED	2
SPITTOON THICK 538	698		BW	2.9
SV Miss Justice 3118			WW	64
			YW	103
			Milk	30
			\$W	59
			\$EN	-17

• Good production bull with 31 milk. These Waylon bulls were built to cover ground and stay easy keeping. This bull will produce feeder calves that have the right look to bring more money into the sale ring.

SPITTOON 2-YEAR-OLD ANGUS BULLS

Lot 9 SPITTOON AMBUSH 120

4/28/2021 • ** Large-Framed Heifer Bull

RR 2931 Ambush 2346
SPITTOON AMBUSH 664
SV Dixie 3070

Act. BW
85

ANGUS
#20465446

HA New Design 4535
BLACKBIRD OF SV 038
Blackbird of SV 594

Adj. WW
651

CED	0
BW	2.3
WW	43
YW	78
Milk	31
\$W	42
\$EN	-8

- +31 milk from my old Blackbird 038 cow that has produced great offspring for me. Wide based, good bull.

Lot 12 SPITTOON POWERBALL 104

4/2/2021 • ** Large-Framed Heifer Bull

PA Power Tool 9108
RAVEN POWERBALL 53
Raven Emma E 4241

Act. BW
92

ANGUS
#20466891

Hoos Traveler 330
SPITTOON TRAVELER 673
SV Erica 1104

Adj. WW
655

CED	4
BW	2.4
WW	60
YW	104
Milk	23
\$W	49
\$EN	-15

- Calving ease cow bull with enhanced fertility and disciplined mature size in his pedigree that gives you a great, even set of calves.

Lot 10 SPITTOON RAMPAGE 108

4/4/2021 • **** Heifer Bull

Quaker Hill Rampage 0A36
SPITTOON RAMPAGE 851
Spittoon Higher Up 326

Act. BW
70

ANGUS
#20465440

GDAR CJD Justice 1717
SV BLACKCAP 3109
SV Blackcap 521

Adj. WW
664

CED	12
BW	-1.1
WW	60
YW	98
Milk	24
\$W	58
\$EN	-10

- Great production heifer bull. His dam is very well uddered with excellent foot structure. A lot of performance behind this bull.

Lot 13 SPITTOON STELLAR 114

4/8/2021 • **** Heifer Bull

Mohnen Substantial 272
SITZ STELLAR 726D
SITZ Pride 200B

Act. BW
75

ANGUS
#20467056

SR Higher Up 0073
SV BLACKCAP LADY 2017
SV Blackcap Lady 046

Adj. WW
629

CED	8
BW	-0.1
WW	57
YW	104
Milk	24
\$W	50
\$EN	-13

- Well built heifer bull that is an outcross, proven pedigree with great maternal design. 2017 Higher Up dam has been consistent in all areas of production and maternal. At 10-years-old, she's still very well uddered.

Lot 11 SPITTOON RAMPAGE 115

4/9/2021 • ** Large-Framed Heifer Bull

Quaker Hill Rampage 0A36
SPITTOON RAMPAGE 851
Spittoon Higher Up 326

Act. BW
85

ANGUS
#20465442

SR Higher Up 0073
SV ERICA 2012
SV Erica 035

Adj. WW
691

CED	7
BW	1.6
WW	62
YW	107
Milk	27
\$W	56
\$EN	-19

- +62 WW, +107 YW with +27 milk, this bull will produce offspring you will love.

Lot 14 SPITTOON AMBUSH 116

4/10/2021 • ** Large-Framed Heifer Bull

J R Ambush 2931
RR 2931 AMBUSH 2346
C H Dixie Erica 9378 129

Act. BW
80

ANGUS
#20465441

HA Cowboy Up 5405
SPITTOON COWBOY UP 741
SV Black Belle 2028

Adj. WW
608

CED	5
BW	1.4
WW	52
YW	91
Milk	25
\$W	47
\$EN	-4

- Very maternal cow bull, moderate built, easy fleshing with good performance.



Lot 15 SPITTOON RAMPAGE 105

4/3/2021 • ** Large-Framed Heifer Bull

Quaker Hill Rampage 0A36
SPITTOON RAMPAGE 851
Spittoon Higher Up 326

Act. BW
85

ANGUS
#20465434

Marcys Scale Crusher
MARCYS ERICA 568
Marcys Erica 255

Adj. WW
711

CED	5
BW	2.8
WW	67
YW	107
Milk	24
\$W	57
\$EN	-15

- Birthing ease cow bull from Marcy Scale Crusher dam 568. Heavy weaning bull with lots of performance.

SPITTOON 2-YEAR-OLD ANGUS BULLS

Lot 16 SPITTOON RAMPAGE 103

3/30/2021 • ***** Heifer Bull

Quaker Hill Rampage 0A36 SPITTOON RAMPAGE 851	Act. BW	ANGUS
Spittoon Higher Up 326	78	#20465437
GDAR CJD Justice 1717 SPITTOON JUSTICE 754	Adj. WW	CED
SV Mabel 015	741	BW 0.1
		WW 68
		YW 108
		Milk 25
		\$W 65
		\$EN -15

- High performance heifer bull with strong cow family, nice made, long lasting kind of bull.

Lot 20 SPITTOON WAYLON 122

5/3/2021 • Safe for Cows

Baldrige Waylon W34 MARCYS 18 WAYLON 50-8	Act. BW	ANGUS
Marcys 08 Pride 25-8	85	#20465448
GDAR CJD Justice 1717 SV STACKER LADY 3135	Adj. WW	CED
SV Stacker Lady 710	659	BW 1
		BW 3.0
		WW 60
		YW 99
		Milk 31
		\$W 56
		\$EN -15

- Actual birth at 85 lbs this cow bull has performance with the highest milk of my bulls at +31. Good numbers all around.

Lot 17 SPITTOON WAYLON 125

5/23/2021 • ** Large-Framed Heifer Bull

Baldrige Waylon W34 MARCYS 18 WAYLON 50-8	Act. BW	ANGUS
Marcys 08 Pride 25-8	75	#20465451
GDAR CJD Justice 1717 SPITTOON JUSTICE 632	Adj. WW	CED
SV Queen Bee 3120	666	BW 7
		BW 1.2
		WW 66
		YW 108
		Milk 29
		\$W 64
		\$EN -18

- Great production and maternal cow bull. Could use on large framed heifers. Actual birth weight 75 lbs.

Lot 21 SPITTOON WAYLON 126

5/1/2021 • Safe for Cows

Baldrige Waylon W34 MARCYS 18 WAYLON 50-8	Act. BW	ANGUS
Marcys 08 Pride 25-8	90	#20465452
GDAR CJD Justice 1717 SV RITO LADY 3044	Adj. WW	CED
HA 4167 Rito Lady 8355	647	BW 1
		BW 3.0
		WW 63
		YW 105
		Milk 27
		\$W 54
		\$EN -10

- Great production and maternal with a little more birth. Rito Lady 3044 has produced some of my best females, well uddered, great disposition.

Lot 18 SPITTOON AMBUSH 123

5/15/2021 • ** Large-Framed Heifer Bull

RR 2931 Ambush 2346 SPITTOON AMBUSH 664	Act. BW	ANGUS
SV Dixie 3070	85	#20465449
SV Traveler 3041 SPITTOON TRAVELER 542	Adj. WW	CED
SV Erica 1104	590	BW 1
		BW 2.9
		WW 42
		YW 79
		Milk 27
		\$W 34
		\$EN -4

- Smaller frame cow bull with good maternal traits. Travels well with good disposition.

Lot 22 SPITTOON POWERBALL 109

4/4/2021 • ***** Heifer Bull

PA Power Tool 9108 RAVEN POWERBALL 53	Act. BW	ANGUS
Raven Emma E 4241	75	#20466892
Woodhill Foresight SPITTOON FORESIGHT 523	Adj. WW	CED
Eriskay or SV 017	654	BW 9
		BW 0.9
		WW 58
		YW 103
		Milk 25
		\$W 52
		\$EN -18

- Great calving ease heifer bull. Dam has maternal with 3@106 and milk at 25. Sleep all night, then watch them grow all year.

Lot 19 SPITTOON WAYLON 124

5/16/2021 • ** Large-Framed Heifer Bull

Baldrige Waylon W34 MARCYS 18 WAYLON 50-8	Act. BW	ANGUS
Marcys 08 Pride 25-8	77	#20465450
S A V Thunderbird 9061 SPITTOON THUNDERBIRD 611	Adj. WW	CED
SV Dixie Erica 4077	618	BW 5
		BW 1.6
		WW 60
		YW 103
		Milk 28
		\$W 56
		\$EN -17

- 60 WW, 103 YW and 28 Milk. This Waylon has performance. Thunderbird dam is a high volume cow that is making a real contribution to my herd.



RECC 2-YEAR-OLD ANGUS BULLS

Lot 23 RECC STELLAR 107
4/1/2021 • Safe for Cows

Mohnen Substantial 272 SITZ STELLAR 726D	Act. BW 84	ANGUS #20496057
SAV Resource 1441 RECC PRIDE 703	WW Ratio 631	
RECC Pride 422		

CED	6
BW	2.4
WW	69
YW	111
Milk	24
\$M	55
\$EN	-7

- Herd bull prospect in this big footed, stout made Sitz Stellar son
- Three-dimensional bull that pushes the scales
- Dam is a consistent producer and comes from a great cow family

Lot 26 RECC OUTRIGHT 117
4/5/2021 • Safe for Cows

K C F Bennett Absolute HAYNES OUTRIGHT 452	Act. BW 80	ANGUS #20495769
HAYNES ND 454 Miss 179		
OCC Paxton 730P TF PAXTON 018	WW Ratio 566	
Alcorns Gridmaker T27		

CED	7
BW	1.3
WW	64
YW	107
Milk	15
\$M	53
\$EN	-14

- Deep, soggy made Outright out of a moderate sized Paxton daughter
- Disposition, udder quality, and fleshing ability are bred into this pedigree
- Dam is a proven producer that will add longevity

Lot 24 RECC OUTRIGHT 109
4/2/2021 • Safe for Cows

K C F Bennett Absolute HAYNES OUTRIGHT 452	Act. BW 86	ANGUS #20495768
HAYNES ND 454 Miss 179		
OCC Prototype 847P RECC PRAIRIE QUEEN	WW Ratio 522	
TF Prairie Queen 314		

CED	6
BW	0.9
WW	66
YW	109
Milk	18
\$M	55
\$EN	-17

- Long spined, deep sided Outright
- Outright is siring long bodied, soft made cattle with quiet dispositions
- Dam has been a steady, consistent producer with an exceptional udder

Lot 27 RECC STELLAR 122
4/6/2021 • ** Large-Framed Heifer Bull

Mohnen Substantial 272 SITZ STELLAR 726D	Act. BW 76	ANGUS #20495736
SITZ Pride 200B		
S Chisum 6147 RECC DIXIE ERICA 617	WW Ratio 564	
TF Dixie Erica 603		

CED	9
BW	1.2
WW	71
YW	118
Milk	19
\$M	76
\$EN	4

- Herd Bull Prospect: Calving ease, muscle, stoutness, maternal pedigree
- He has been an eye catcher from a young age and continues to look like a herd bull
- Dam is easy keeping, tight uddered, and traces back to one of our original donors

Lot 25 RECC EMBLAZON 999 112
4/4/2021 • **** Heifer Bull

O C C Emblazon 854E LD EMBLAZON 999	Act. BW 79	ANGUS #20495745
SH Forever Lady 3124 5118		
Sitz Dash 10277 RECC SANDY PRIDE 602	WW Ratio 554	
JD Sandy Pride 2834		

CED	11
BW	-0.1
WW	58
YW	96
Milk	18
\$M	46
\$EN	-11

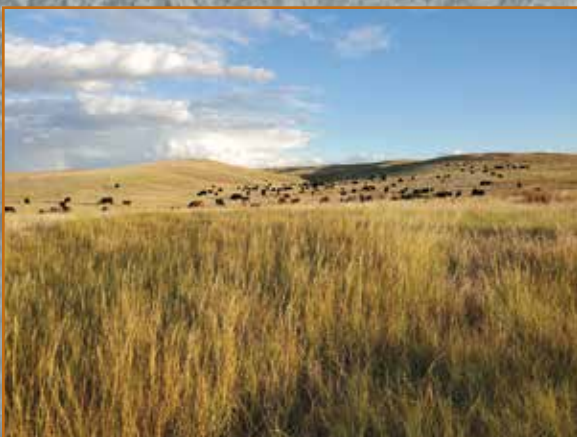
- Big middled, calving ease Emblazon 999 heifer bull
- Smooth shouldered and long necked; he's built to be easy calving
- Dam has generations deep of calving ease

Lot 28 RECC STELLAR 127
4/9/2021 • Safe for Cows

Mohnen Substantial 272 SITZ STELLAR 726D	Act. BW 91	ANGUS #20496558
SITZ Pride 200B		
S Chisum 6147 RECC DIXIE ERICA 413	WW Ratio 577	
TF Dixie Erica 807		

CED	6
BW	1.5
WW	66
YW	114
Milk	19
\$M	71
\$EN	8

- Stellar son here: Stellar is known for producing outstanding females
- Stellar offspring will improve foot quality and structure
- Dam is a consistent, proven Chisum daughter



Lot 29 RECC STELLAR 128
4/9/2021 • **** Heifer Bull

Mohnen Substantial 272 SITZ STELLAR 726D	Act. BW 77	ANGUS COMMERCIAL
SITZ Pride 200B		
Sitz Dash 10277 RECC DASH 802	WW Ratio 518	
RECC Forever Lady 616		

CED	15
BW	-0.5
WW	55
YW	92
Milk	23
\$M	68
\$EN	4

- Moderate sized, calving ease Stellar
- Stellar, Dash, Meat Packer in 3 generations will make exceptional females
- Dash is very moderate with an "EXT" type udder

RECC 2-YEAR-OLD ANGUS & SIMANGUS BULLS

Lot 30 **RECC Cowboy 139**
4/20/2021 • ***** Heifer Bull

Duff Basic Instinct RECC INSTINCT 412 OCC Juanada 664R	Act. BW 78	ANGUS COMMERCIAL
Sitz Dash 10277 RECC TESA 804 TF Tesa 619	WW Ratio 546	

CED	13
BW	-0.8
WW	46
YW	85
Milk	26
\$M	54
\$EN	3

- Calving ease heifer bull by our herd sire we called Cowboy
- Another bull with generations of calving ease bred in
- His sire has been solid for us and left some productive daughters

Lot 32 **RECC Stockman 159**
4/13/2021 • Safe for Cows

CCR Wide Range 9005A CCR STOCKMAN 8033E CCR MS 7322 Brill 3370A	BREED 44% AN, 56% SM
MR NLC Upgrade RECC UPGRADE 3016 TF Homer 8018	

Act. BW	81
Adj. WW	552
WW Ratio	98
YW	1110
YW Ratio	98
API	133
TI	88

- First of a nice set of CCR Stockman sons
- Stockman has been a standout sire for us; they've been consistently good
- Out of a proven, steady Upgrade dam

Lot 31 **RECC Stellar 164**
4/7/2021 • ***** Heifer Bull

Mohnen Substantial 272 SITZ STELLAR 726D SITZ Pride 200B	Act. BW 75	ANGUS #20496058
Sitz Dash 10277 RECC PRINCESS 518 RECC Princess 309	WW Ratio 588	

CED	12
BW	1.1
WW	68
YW	103
Milk	21
\$M	66
\$EN	-6

- Herd Bull Potential: Another stud sired by Stellar
- Moderate, wide based, big middle. What you'd expect from his sire
- We're really excited about these Stellar sons. They're easy to like

Lot 33 **RECC Stockman 155**
4/9/2021 • Safe for Cows

CCR Wide Range 9005A CCR STOCKMAN 8033E CCR MS 7322 Brill 3370A	BREED 69% AN, 31% SM
OCC Ultra Good 686U RECC ULTRA GOOD 3025 TF LC 119	

Act. BW	94
Adj. WW	576
WW Ratio	102
YW	1135
YW Ratio	101
API	141
TI	79

- Long-necked Stockman out of a solid Angus cow
- Most of these Stockman sons should make excellent females
- Dam will be 10; she still has a neat udder



Lot 34 **RECC Stockman 156**
4/9/2021 • Safe for Cows

CCR Wide Range 9005A CCR STOCKMAN 8033E CCR MS 7322 Brill 3370A	BREED 50% AN, 50% SM
Hooks Trinity 9T RECC TRINITY 4007 TF Ultra Good 1025	

Act. BW	90
Adj. WW	580
WW Ratio	103
YW	1090
YW Ratio	97
API	139
TI	81

- Moderate, stout made Stockman out of a similarly made Trinity cow
- Stockman has worked great on our Trinity daughters
- Really nice half blood bull here

Lot 35 **RECC Stockman 158**
4/12/2021 • Safe for Cows

CCR Wide Range 9005A CCR STOCKMAN 8033E CCR MS 7322 Brill 3370A	BREED 44% AN, 56% SM
Leachman Bright Light RECC HOOSIER 4017 TF New Life 0012	

Act. BW	96
Adj. WW	590
WW Ratio	105
YW	1145
YW Ratio	102
API	147
TI	77

- Stockman backed by a longer spined, rangy Bright Light dam
- We have higher BW than normal out of this calf crop, but didn't assist any of these bulls
- Bull that will sire steers that will weigh and daughters that will stay

JACOB, MADDY, AND THATCHER TEJRAL ARE RANCH MANAGERS FOR US AT RECC. WE GREATLY APPRECIATE THEIR HARD WORK, LOYALTY, AND KNOWLEDGE. THEY ARE ALSO A VALUABLE PART OF OUR CUSTOM AI BUSINESS, BRINGING EXPERTISE AND EXPERIENCE.

RECC 2-YEAR-OLD SIMANGUS BULLS

Lot 36 RECC STOCKMAN 163

4/15/2021 • Safe for Cows

CCR Wide Range 9005A
CCR STOCKMAN 8033E
CCR MS 7322 Brill 3370A

Hooks Trinity 9T
RECC TRINITY 5008
TF Final Answer 1007

- High performing, rugged made Stockman
- His dam has gradually made her way to the top end of our herd
- He will sire pounds; great option in a terminal program

BREED	
44% AN, 56% SM	
Act. BW	95
Adj. WW	596
WW Ratio	106
YW	1250
YW Ratio	111
API	144
TI	76

Lot 39 RECC STOCKMAN 162

4/4/2021 • Safe for Cows

CCR Wide Range 9005A
CCR STOCKMAN 8033E
CCR MS 7322 Brill 3370A

Hooks Trinity 9T
RECC TRINITY 6016
TF Enhancer 739

- Stockman/Trinity combo again; he's long necked and smooth made
- The cows in his pedigree are moderate framed with great udders
- Daughters should be medium sized, milky cows

BREED	
50% AN, 50% SM	
Act. BW	78
Adj. WW	584
WW Ratio	104
YW	1175
YW Ratio	104
API	148
TI	81

Lot 37 RECC STOCKMAN 153

4/6/2021 • Safe for Cows

CCR Wide Range 9005A
CCR STOCKMAN 8033E
CCR MS 7322 Brill 3370A

Hooks Trinity 9T
RECC TRINITY 5030
TF Visegrip 404

- Another moderate, super stout Stockman/Trinity bull
- Maternally oriented bull from a compact, super uddered Trinity
- He would be a great option to make replacement females

BREED	
50% AN, 50% SM	
Act. BW	84
Adj. WW	586
WW Ratio	104
YW	1220
YW Ratio	108
API	145
TI	82

Lot 40 RECC STOCKMAN 161

4/13/2021 • Safe for Cows

CCR Wide Range 9005A
CCR STOCKMAN 8033E
CCR MS 7322 Brill 3370A

Hooks Trinity 9T
RECC TRINITY 6022
TF Final Answer 1009

- Moderate sized Stockman/Trinity: The next 4 lots would fit together well
- Dam is moderate, productive, and fertile
- This bull should make excellent steers and heifers alike

BREED	
50% AN, 50% SM	
Act. BW	89
Adj. WW	518
WW Ratio	92
YW	1110
YW Ratio	99
API	140
TI	74

Lot 38 RECC STOCKMAN 160

4/13/2021 • Safe for Cows

CCR Wide Range 9005A
CCR STOCKMAN 8033E
CCR MS 7322 Brill 3370A

Leachman Bright Light
RECC BRIGHT LIGHT 5034
TF Homer 9013

- One of my favorites. Lots of performance but maintains eye appeal
- His full brother was a leadoff bull last year; he went to work for Tim Burney in Brownlee
- His dam is a bigger cow for us, but she produces pounds

BREED	
44% AN, 56% SM	
Act. BW	98
Adj. WW	578
WW Ratio	103
YW	1310
YW Ratio	116
API	142
TI	80

Lot 41 RECC STOCKMAN 157

4/10/2021 • Safe for Cows

CCR Wide Range 9005A
CCR STOCKMAN 8033E
CCR MS 7322 Brill 3370A

Hooks Trinity 9T
RECC TRINITY 6023
TF Alliance 81

- Another moderate sized Stockman
- Dam is productive and fertile
- We've been very happy with the Stockman daughters

BREED	
50% AN, 50% SM	
Act. BW	94
Adj. WW	550
WW Ratio	98
YW	1090
YW Ratio	97
API	141
TI	84



Lot 42 RECC STOCKMAN 152

4/4/2021 • Safe for Cows

CCR Wide Range 9005A
CCR STOCKMAN 8033E
CCR MS 7322 Brill 3370A

Hooks Trinity 9T
RECC TRINITY 6028
TF Prototype 1047

- Stockman with a little extra hip and style
- His dam is a Trinity back to and Ohlde bred Angus cow
- Moderate framed, easy keeper

BREED	
50% AN, 50% SM	
Act. BW	91
Adj. WW	570
WW Ratio	101
YW	1075
YW Ratio	96
API	143
TI	77

RECC 2-YEAR-OLD SIMANGUS BULLS

Lot 43 RECC STOCKMAN 154

4/7/2021 • Safe for Cows

CCR Wide Range 9005A
CCR STOCKMAN 8033E
CCR MS 7322 Brill 3370A

Hooks Trinity 9T
RECC TRINITY 8004
TF Alliance 7414

- High performance, stout made Stockman, he is wide throughout
- Expect long lasting, moderate sized, neat uddered daughters
- Out of a promising young cow

BREED	
50% AN, 50% SM	
Act. BW	83
Adj. WW	622
WW Ratio	110
YW	1265
YW Ratio	112
API	138
TI	75

Lot 47 RECC FREIGHT TRAIN 168

4/16/2021 • Safe for Cows

Hook's Black Hawk 50B
CLRS FREIGHT TRAIN
CLRS Deer Vally 608D

Hooks Trinity 9T
RECC TRINITY 5025
TF Homer 8018

- Long spined, muscular, and impressive
- His dam is a moderate, sweet uddered young cow
- We'll have many more of these Freight Train sons in coming years

BREED	
44% AN, 56% SM	
Act. BW	90
Adj. WW	598
WW Ratio	106
YW	1195
YW Ratio	106
API	149
TI	91

Lot 44 RECC STOCKMAN 167

4/9/2021 • Safe for Cows

CCR Wide Range 9005A
CCR STOCKMAN 8033E
CCR MS 7322 Brill 3370A

OCC Manchester 855M
TF MANCHESTER 2001 ELSA
QCC Olie 6267

- Stockman out of Oakley's herdsire maker
- Dam has produced several sons that are working in either our herd or for customers
- This bull has gotten better and better with age

BREED	
50% AN, 50% SM	
Act. BW	93
Adj. WW	572
WW Ratio	102
YW	1185
YW Ratio	105
API	131
TI	71

Lot 48 RECC UNITED 171

4/1/2021 • Safe for Cows

TNT Tuition U238
W/C UNITED 956Y
Miss Werning 956W

Hooks Trinity 9T
RECC TRINITY 5027
TF Danny 2032

- Moderate framed, stout muscled United bull
- United has made high performance, eye appealing cattle for us
- Out of one of my favorite Trinity cows

BREED	
56% AN, 44% SM	
Act. BW	91
Adj. WW	630
WW Ratio	112
YW	1225
YW Ratio	109
API	121
TI	85

Lot 45 RECC STOCKMAN 151

4/2/2021 • ** Large-Framed Heifer Bull

CCR Wide Range 9005A
CCR STOCKMAN 8033E
CCR MS 7322 Brill 3370A

Hooks Trinity 9T
RECC TRINITY 8005
TF Homer 8011

- Stockman son that should work on heifers
- Dam side of pedigree has loads of calving ease bred in
- Full disclosure: Dam's udder is less than optimal

BREED	
50% AN, 50% SM	
Act. BW	66
Adj. WW	586
WW Ratio	104
YW	1280
YW Ratio	114
API	139
TI	76

Lot 49 RECC UNITED 170

3/31/2021 • Safe for Cows

TNT Tuition U238
W/C UNITED 956Y
Miss Werning 956W

Hooks Trinity 9T
RECC TRINITY 5033
TF Ann 018

- Same style as 48; stout, beefed up, muscular
- Dam is a typical Trinity
- United sons have been well received

BREED	
56% AN, 44% SM	
Act. BW	76
Adj. WW	648
WW Ratio	115
YW	1205
YW Ratio	107
API	116
TI	88

Lot 46 RECC FREIGHT TRAIN 165

4/6/2021 • Safe for Cows

Hook's Black Hawk 50B
CLRS FREIGHT TRAIN
CLRS Deer Vally 608D

Cole Creek Cedar Ridge
RECC CEDAR RIDGE 4028
TF Prototype 021

- First of new sire group: Freight Train; they're performance cattle
- Dam is a very moderate, calving ease Cedar Ridge daughter
- Expect added performance and growth from this bull

BREED	
63% AN, 37% SM	
Act. BW	89
Adj. WW	552
WW Ratio	98
YW	1135
YW Ratio	101
API	136
TI	84



Freight Train

RECC 2-YEAR-OLD SIMANGUS BULLS

Lot 50 RECC FERDINAND 173

5/16/2021 • Safe for Cows

ACW Iron Hide 395Y
RECC IRON HIDE 854
RECC Manchester 2001

RECC Superior 303
RECC SUPERIOR 6002
RECC Dream On 201

- Sired by our herdsire that our girls lovingly call Ferdinand
- Ferd is out of Oakley's "ELSA" cow, Lot 44 is Ferd's half brother
- Ferdinand sires extra performance, muscle, and style

BREED
63% AN, 37% SM

Act. BW	91
Adj. WW	626
WW Ratio	111
YW	1290
YW Ratio	115
API	122
TI	74

Lot 54 RECC ACHIEVEMENT 180

3/25/2021 • ***** Heifer Bull

Poss Lasting Impact 3118
POSS ACHIEVEMENT
Poss Erica 327

CCR Stockman 8033E
RECC STOCKMAN 9009
TF Echelon 8008

- 4 star calving ease from a different angle for us; sire by Poss Achievement
- Achievement sires easy calving, solid growth, and top carcass genetics
- His dam is one of my favorite young Stockman cows in our herd

BREED
81% AN, 19% SM

Act. BW	74
Adj. WW	608
WW Ratio	108
YW	1145
YW Ratio	102
API	161
TI	88

Lot 51 RECC FERDINAND 174

5/16/2021 • Safe for Cows

ACW Iron Hide 395Y
RECC IRON HIDE 854
RECC Manchester 2001

RECC Superior 303
RECC SUPERIOR 6024
RECC Dream On 401

- Another younger, but stout, Ferdinand son
- These Ferd sons will cover lots of cows if they work like their dad
- 50 & 51 would make a nice pair. They may throw some white on their calves

BREED
63% AN, 37% SM

Act. BW	81
Adj. WW	610
WW Ratio	108
YW	1265
YW Ratio	112
API	119
TI	76

Lot 55 RECC RUSHMORE 191

4/1/2021 • Safe for Cows

THSF Freedom 300N
TRAXS RUSHMORE X103
Miss Trax U850

PG Dream On
RECC DREAM ON 401
TF Alliance 1168

- First of the red bulls; high % Simmental, outcross to most red genetics
- Dam is a really consistent, eye appealing Dream On bred cow
- Moderate birth weight, big time performance

BREED
37% RA, 63% SM

Act. BW	82
Adj. WW	644
WW Ratio	114
YW	1310
YW Ratio	116
API	145
TI	83

Lot 52 RECC Cowboy 175

4/27/2021 • ** Large-Framed Heifer Bull

Duff Basic Instinct
RECC BASIC INSTINCT 412
OCC Dixie Erica 806J

Hooks Trinity 9T
RECC TRINITY 8003
RECC Visegrip 504

- Out of another herdsire, who we called Cowboy
- This bull will be heifer safe, and make great females
- Cowboy worked for us for 7 years and left many nice daughters

BREED
81% AN, 19% SM

Act. BW	78
Adj. WW	515
WW Ratio	91
YW	1070
YW Ratio	95
API	121
TI	81

Lot 56 RECC RUSHMORE 194

4/9/2021 • Safe for Cows

THSF Freedom 300N
TRAXS RUSHMORE X103
Miss Trax U850

LCoC Total Package X571Y
RECC TOTAL PACKAGE 411
Troester Cow

- Rugged made, long bodied Rushmore with added length
- Dam is a big, stout mama; Lot 56 will work great in a terminal scenario
- I like this bull; has good feet and walks out smooth

BREED
25% RA, 75% SM

Act. BW	89
Adj. WW	548
WW Ratio	97
YW	1325
YW Ratio	118
API	148
TI	81

Lot 53 RECC CROSSBOW 172

3/26/2021 • ***** Heifer Bull

KM Broken Bow 002
SPRING COVE CROSSBOW
Spring Cove Pretty 205

CCR Stockman 8033E
RECC STOCKMAN 9005
TF Danny 2012

- Another heifer bull by popular ABS bull, Crossbow
- We went back and used Crossbow on our heifers again; we want more
- He'll make them moderate sized and sweet uddered

BREED
81% AN, 19% SM

Act. BW	74
Adj. WW	544
WW Ratio	97
YW	1095
YW Ratio	97
API	117
TI	78

Lot 57 RECC RUSHMORE 196

4/16/2021 • Safe for Cows

THSF Freedom 300N
TRAXS RUSHMORE X103
Miss Trax U850

LCoC Total Package X571Y
RECC TOTAL PACKAGE 414
Troester Cow

- Rushmore son out of another of Oakley's cows
- He might be my favorite red bull; thick, wide, super easy going
- His dam has raised many exceptional cows

BREED
25% RA, 75% SM

Act. BW	95
Adj. WW	604
WW Ratio	107
YW	1330
YW Ratio	118
API	148
TI	81

RECC 2-YEAR-OLD SIMANGUS BULLS

Lot 58 RECC RUSHMORE 192

4/8/2021 • Safe for Cows

THSF Freedom 300N
TRAXS RUSHMORE X103

Miss Trax U850

PG Dream On
RECC DREAM ON 304

TF Lucky Charm 8052

- 58 is a touch more moderate in size but still carries stoutness/muscle
- Dam is medium in frame; she's been a steady producer
- Outcross to many Red SimAngus cattle

BREED

37% RA, 63% SM

Act. BW	91
Adj. WW	576
WW Ratio	102
YW	1210
YW Ratio	108
API	
TI	

NOTES

Lot 59 RECC RUSHMORE 198

4/20/2021 • Safe for Cows

THSF Freedom 300N
TRAXS RUSHMORE X103

Miss Trax U850

Leachman Big Gene
RECC BIG GENE 504

RECC Dream On 304

- Similar to 58; they'd make a nice pair
- His dam, 504, is angular yet muscular. Nice udder/teat size
- Don't overlook him

BREED

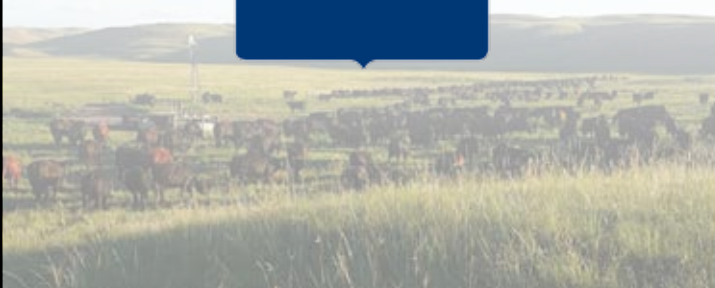
31% RA, 69% SM

Act. BW	83
Adj. WW	514
WW Ratio	91
YW	1180
YW Ratio	105
API	
TI	

SETH TERRELL
ABS REPRESENTATIVE
308-430-0705

FULL SERVICE AI PROVIDER

SEMEN, SERVICE, SUPPLIES



Rivers Edge Cattle Co
Seth & Courtney Terrell
2219 Hidden Valley Rd.
Chadron, NE 69337



RIVERS EDGE CATTLE COMPANY & SPITTOON RANCH 7TH ANNUAL FALL BULL SALE

DECEMBER 13, 2022

SETH TERRELL'S CELL
308.430.0705

MATT PETER'S CELL
308.360.2736

